

Submitted by the Alaska Department of Fish and Game

Date January 23, 2022

Background Materials Copper Basin Community Hunt for Moose

1. Copper Basin MOOSE Community Subsistence Harvest Permit PROGRAM 2022-2023
2. Copper Basin Community Subsistence Hunt Coordinator Report – Moose
3. ADF&G Copper Basin Community Subsistence Hunt (CSH) Guide to Filling out the COORDINATOR report – Moose for 2021
4. Copper Basin Community Subsistence Hunt Household Report – Moose
5. ADF&G Copper Basin Community Subsistence Hunt (CSH) Guide to Filling out the HOUSEHOLD Report – Moose 2021



ALASKA DEPARTMENT OF FISH AND GAME
Copper Basin MOOSE
Community Subsistence Harvest Permit
PROGRAM 2022-2023



HUNT ADMINISTRATION

Community Subsistence Harvest (CSH) Hunt administration will be in accordance with the Alaska Department of Fish and Game's (ADF&G) statutory and regulatory authority, including managing this common use resource for sustained yield while adhering to laws regarding the subsistence preference passed by the Alaska State Legislature.

COPPER BASIN MOOSE CSH PERMIT

According to regulations found at 5 AAC 92.072 *Community Subsistence Harvest Hunt Area and Permit Conditions* and at 5 AAC 92.052 *Discretionary Permit Hunt Conditions and Procedures*, ADF&G may issue community-based subsistence harvest permits for big game species where the Alaska Board of Game (board) has established a community harvest hunt area. The board established the Gulkana, Cantwell, Chistochina, Gakona, Mentasta, Tazlina, Chitina, and Kluti-Kaah (Copper Center) Community Harvest Area for moose and caribou in 2009 (5 AAC 92.074(d) *Community Subsistence Harvest Areas*), hereafter referred to as the Copper Basin CSH area.

The CSH permit program allows communities or groups of 25 or more to apply for a Copper Basin CSH permit to participate in the CSH program for a period of two consecutive years. Once established, all group members must comply with all CSH hunting requirements for the two-year commitment period and group membership cannot be changed until the permit expires. The Copper Basin Moose CSH Group/Community permit expires at the end of the second regulatory year for which it is valid. Renewal of a Copper Basin CSH permit at the end of the two-year commitment period is the responsibility of the community or group coordinator.

A group can choose to apply for a Copper Basin Moose CSH permit, a Copper Basin Caribou CSH permit, or both. A community or group may possess only one Copper Basin Moose CSH Group/Community permit at any given time and group members may subscribe to only one Copper Basin Moose CSH group at a time. These groups may select, from their group members, individual hunters who may possess hunting expertise to harvest wildlife resources on behalf of the community or group.

The hunt conditions in this Copper Basin Moose CSH permit program are intended to notify the community/group of users of how to use the moose in a manner consistent with the customary and traditional use pattern described in the board's 2006 findings *Game Management Unit 13 Caribou and Moose Subsistence Uses* (2006-170-BOG), as well as to ensure an orderly administration of the CSH permit program and hunt (CM300).

CM300 APPLICATION PROCESS DURING THE FIRST YEAR

THE COMMUNITY OR GROUP COORDINATOR

In addition to permit hunt conditions and procedures found in 5 AAC 92.050 and 5 AAC 92.072, the community or group applying for a Copper Basin Moose CSH Group/Community permit must designate a coordinator as part of the application process. The coordinator certifies that the information presented in a Copper Basin Moose CSH permit application is true and correct to the best of the coordinator's knowledge; monitors and reports on compliance with the conditions of a Copper Basin Moose CSH permit; and serves as the primary point of contact, among other duties. ADF&G will issue one CSH Group/Community Moose Permit for the Copper Basin Community Harvest Hunt Area to each coordinator.

For 2022–2023 group coordinators must apply online during the October 1–December 15, 2021, application period at <http://hunt.alaska.gov/>. Once group coordinators have successfully applied online they will receive, via email a 2022-2023 group number. The group number will be needed for community or group members to apply online. Groups will not be formally approved until:

- 1) at least 25 eligible group members have applied (including the group coordinator); and
- 2) all moose CSH permit reporting requirements from the previous regulatory year have been met (not applicable to first-time CSH groups).

There is no limit to the number of communities or groups that may apply for a Copper Basin Moose CSH permit and there is no limit to the number of participants who may subscribe to a community or group, except that there must be 25 or more verified eligible members in each group.

INDIVIDUALS/HOUSEHOLDS

The online application period for individual/participant applications is November 1–December 15, 2021, until 5 p.m. (AKST). Applications must include a valid 2022–2023 group number provided by the group coordinator. Incomplete applications will be void per 5 AAC 92.050 *Required Permit Hunt Conditions and Procedures*.

Each household must submit one completed participant application. CSH applicants must be Alaskan residents at the time of application. **All members of the household must be listed on the application and are subject to all CSH hunt eligibility requirements and conditions. The coordinator must ensure that group members understand the terms and conditions of the CSH permit hunt.**

A “household” means that group of people domiciled in the same residence per 5 AAC 92.990 (23) *Definitions*.

By submitting a completed participant application, all household members are certifying they have read, understood, and will comply with the hunt conditions as well as the applicable Board of Game findings (2006-170-BOG *Game Management Unit 13 Caribou and Moose Subsistence Uses*).

ADF&G will issue one Copper Basin CSH moose harvest ticket/report to each household member who is over the age of 10 listed on the application. Harvest tickets/reports will be mailed to eligible participants who provide hunting license information on the participant application, including youth who are not required to possess a hunting license. Eligible participants who do not provide hunting license information on the application will be required to present a valid hunting license in-person at the ADF&G office in Palmer or Glennallen in order to receive a harvest ticket/report.

Hunters must abide by all applicable state hunting regulations and statute requirements including licensing, hunter education, and reporting requirements. Similar to other state hunts, CSH harvest tickets must be carried in the field while hunting, they must be validated immediately upon killing an animal and before leaving the kill site, and they must remain in the hunter's possession until the animal has been delivered to the location of processing for human consumption.

"ANY-BULL" LOCKING-TAGS

Up to 100 bull moose that do not meet general season antler restrictions ("any-bull") may be taken in Units 11 and 13 during the fall season. "Any-bull" locking-tags will be distributed to participants using scoring criteria to determine the customary and direct dependence on the game population by the subsistence user for human consumption as a mainstay of livelihood. These "any-bull" locking-tags may be transferred between group members without notifying ADF&G. **Locking-tags will not be re-issued if lost.** Hunters will be required to have a CSH "any-bull" locking-tag in their possession to harvest a moose that does not meet general season antler restrictions and must affix the CSH "any-bull" locking-tag to the main beam of one antler immediately upon the harvest of an "any-bull" moose. Hunters that do not have a CSH "any-bull" locking-tag in their possession will only be allowed to harvest a bull moose that conforms to the general season antler restrictions for the CSH hunt area.

SCORING CRITERIA

Each CSH "Any-bull" Locking-Tag application is scored on the basis of the information provided by the applicant. Answers may be subject to verification. A total of up to 140 points is possible. There are five questions on the application that are used for scoring:

1. Up to 50 points are awarded for the number of years the applicant has hunted or eaten meat from the game population in the hunt area, or would have hunted this population, but could not because state regulations would not allow it. One point is awarded for each year.
2. Up to 10 points are awarded for the number of years any one member of the household has hunted or eaten meat, or would have hunted this population, but could not because state regulations would not allow it. One-fifth of a point is awarded for each year.
3. Up to 25 points are awarded for the number of days you spent hunting and/or fishing during the last regulatory year in the CSH Copper Basin hunt area. The maximum number of points will be awarded to applicants who hunted and fished in the area for 70 days or more during the last regulatory year.
4. Up to 25 points are awarded for the cost of food in the community where most of the applicant's household store-bought food was purchased during the past year. Points received may not exceed the points calculated by the department using the cost-of-food index for the community nearest the applicant's residence.
5. Up to 30 points are awarded for the cost of automotive fuel in the community where most of the applicant's household automotive fuel was purchased during the past year. Points received may not exceed the points calculated by the department using the cost of automotive fuel for the community nearest the applicant's residence.

PARTICIPANT ELIGIBILITY

All household members subscribing to the Copper Basin Moose CSH hunt must meet the following eligibility requirements. The requirements apply to the same regulatory year as the CSH participant application (2022–2023).

- No member of the household can hold any state drawing/Tier I/Tier II/registration moose hunts, hold general season moose harvest tickets, or hold federal moose permits outside of the CSH hunt area. After the CSH hunt has ended, unsuccessful individual household members may hold state harvest tickets or permits for areas where the bag limit is greater than one moose per person.
- No member of the household can hold any state or federal registration/Tier I/Tier II/drawing caribou permits outside the Copper Basin CSH hunt area.
- All household members agree to the hunt conditions herein.
- A member of the household can be on the Failure to Report (FTR) list and be counted as a group member but will not be allowed to participate in CSH hunting activities.
- A “community” or “group” is a mutual support network of people who routinely (at least several times each year) provide each other with physical, emotional, and nutritional assistance in a multi-generational and inter/intra-familial manner to assure the long-term welfare of individuals, the group, and natural resources they depend on. A “community” or “group” shares a common interest in, and participation in uses of, an identified area and the wildlife populations in that area, that is consistent with the customary and traditional use pattern of that wildlife population and areas as defined by the board (5 AAC 92.072 (i)(2)).

APPLICATION PROCESS DURING THE SECOND YEAR

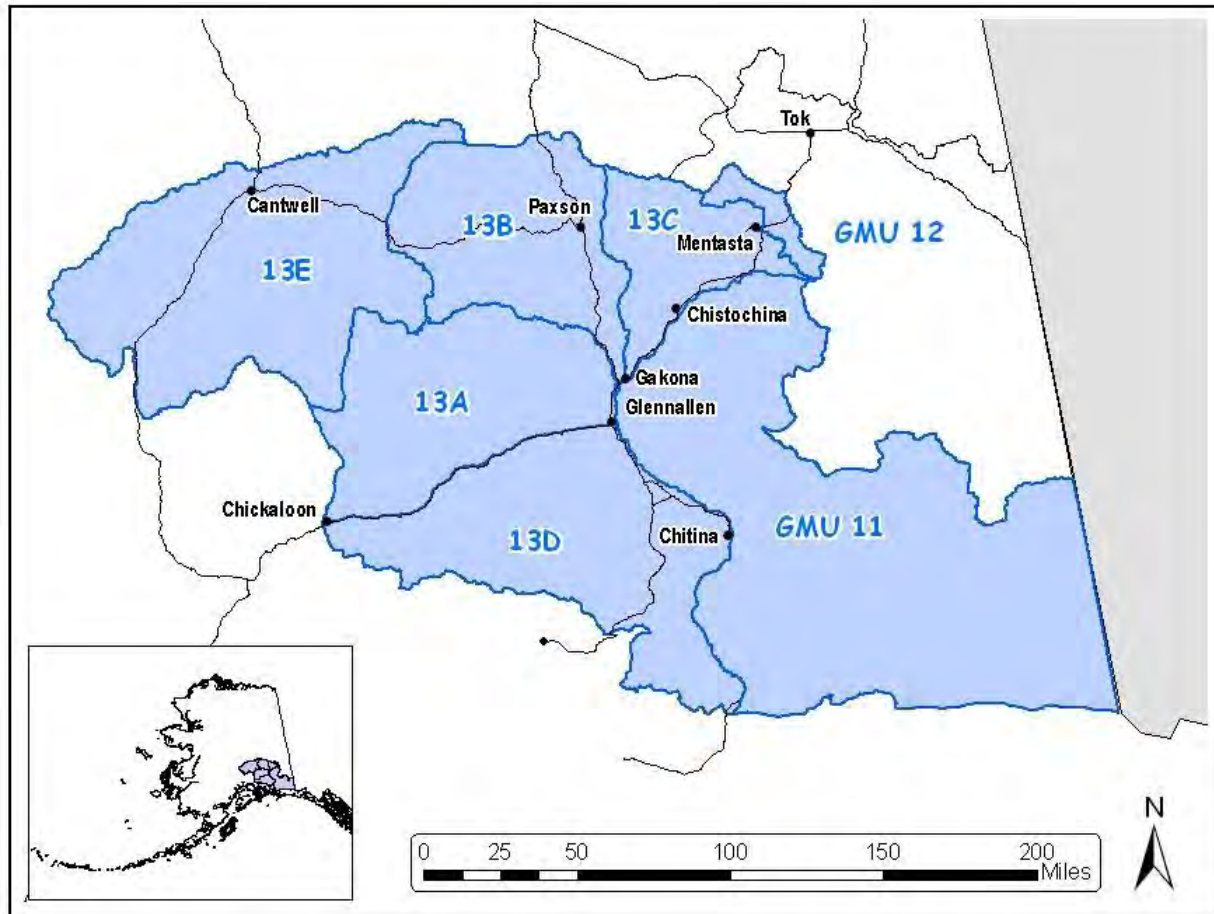
In order to be *eligible* for the "any-bull" locking tag during the second year of the required two-year commitment individual and households must re-apply during the November 1–December 15 application period. Individuals and households will have to apply each year to provide updated information on the scoring criteria to determine the customary and direct dependence on the game population by the subsistence user for human consumption as a mainstay of livelihood to properly allocate the "any-bull" locking-tags among all applicants. **Those who do not submit information for the scoring criteria will receive zero points toward the allocation of the "any-bull" locking-tag.**

Households can access their application information and update any contact information that may have changed from the previous application period and submit updated answers to the “any-bull” locking-tag allocation questions online at <http://hunt.alaska.gov/>.

The group coordinator will be responsible for ensuring that the contact information for every individual and household is up to date prior to the December 15 deadline for permit applications. Group coordinators will also be responsible for ensuring that individual and household hunting license information is updated to the corresponding regulatory year. **If a valid hunting license (2022 or 2023 hunting license) is not provided, participants will be required to come to the Palmer or Glennallen Fish & Game office to obtain their permit.** Group coordinators can view group information through the “CSH Group Coordinator Access” link online <http://hunt.alaska.gov/> .

COPPER BASIN CSH PERMIT HUNT AREA, AND AREA OPEN TO MOOSE HUNTING

The Copper Basin CSH permit hunt area includes all of Unit 11, Unit 13, and a portion of Unit 12 (southwest of the Tok River where it crosses the Glenn Highway Tok Cut-Off) per 5 AAC 92.074 (d) (See map below).



OPEN SEASONS, BAG LIMITS, ANTLER RESTRICTIONS

The Copper Basin moose CSH hunting season dates and bag limits are specific to game management units within the CSH area. The bag limit for the fall season is one bull moose per person in Unit 11 and 13 and one bull moose with spike/fork, or 50" antlers, or 4 or more brow tines in the open portion of Unit 12, unless modified by ADF&G emergency order.

Up to 100 bull moose that do not meet general season antler restrictions can be taken during the fall season. To harvest a bull moose that does not meet general season antler restrictions, a hunter must have in their possession the "any-bull" locking-tag. Limits may be set on how many bulls that do not meet the general season requirements may be harvested from specific geographic areas within the CSH hunt area for conservation reasons.

If the number of bulls that do not meet the general season requirements reported taken for any one geographic area reaches or exceeds established conservation limits (announced prior to hunting season), the area will remain open to CSH hunters, although the bag limit will change by emergency order to reflect the general season antler restriction for the area.

The Copper Basin Moose CSH hunt season dates and general season antler restrictions are listed below:

Area	CSH Season Dates	General Season Antler Restrictions
Unit 11	August 20–September 20	Spike/fork, or 50" antlers, or 3 or more brow tines on at least 1 side.
Unit 13	August 20–September 20	Spike/fork, or 50" antlers, or 4 or more brow tines on at least 1 side.
Portion of Unit 12	August 24–August 28 & September 8–September 17	Spike/fork, or 50" antlers, or 4 or more brow tines on at least 1 side..

DESIGNATED HUNTERS

The CSH program allows a community or group to designate members (from within the group) who may possess hunting expertise to harvest wildlife resources on behalf of the members of the community or group. To take a moose on behalf of another CSH harvest ticket holder (beneficiary), a hunter must carry both the beneficiary's and their own CSH moose harvest ticket in the field while hunting. If a designated hunter is hunting an "any-bull" for a beneficiary, the hunter must also have the "any-bull" locking-tag in their possession. "Any-bull" locking-tags may only be transferred to a designated hunter belonging to the same group as the beneficiary. The harvested moose must be delivered to the beneficiary. The beneficiary is responsible for all reporting requirements.

HUNT TERMS AND CONDITIONS

Customary and traditional uses of Copper Basin moose are thoroughly described in 2006-170-BOG. The board found that the subsistence pattern in the Copper Basin is characterized by thorough use of most of the harvested animal. Therefore, all participants in the Copper Basin Moose CSH hunt must salvage* for human consumption:

1. the head, heart, liver, kidneys, stomach, and hide, as well as all edible meat from the forequarters, hindquarters, ribs, neck, and backbone; and
2. meat of the forequarters, hindquarters, ribs, brisket, neck, and back bone must remain naturally attached to the bones until delivered to the place where it is processed for human consumption.

** These salvage requirements apply to all bulls harvested under a CSH Moose permit, regardless of potential changes in bag limit in-season.*

The board also found that the subsistence pattern is characterized by meaningful communal sharing. At least one communal sharing event featuring moose harvested under the terms of a Copper Basin CSH hunt must be held. A complete description of the event(s) (date, location, number of participants, amount of meat shared, and so forth) must be included in the final hunt report, to be submitted by the group/community coordinator (see below).

CUSTOMARY AND TRADITIONAL USE PATTERN

The edible products of moose taken under the terms of a Copper Basin Moose CSH hunt must be used for human consumption and may not be sold or offered for sale. To comply with 5 AAC 92.072 (c)(1)(F), the department must ensure that the applicable customary and traditional use patterns described in board findings are observed by subscribers, including meat sharing. Subscribers need not have already

established the pattern of community use summarized below; however, by applying, subscribers will be certifying that they have read, understood, and will voluntarily attempt to participate in and establish the pattern of subsistence use described in the Unit 13 board findings summarized below:

1. Participation in the consistent pattern of noncommercial taking, use, and reliance on Nelchina caribou, Copper Basin moose and other local wild foods. The existing pattern of use has been established over many generations and is focused on the total aggregate of fish, wildlife, and plant resources in the Copper Basin CSH area.
2. Participation in the pattern of taking or use of wild resources from the Copper Basin CSH area that follows a seasonal use pattern of year-round harvest effort in the area, with harvests of moose and caribou by community members in both the fall and winter hunts, when legally permissible.
3. Participation in the pattern of taking or use of wild resources in the Copper Basin CSH area that includes methods and means of harvest characterized by efficiency and economy of effort and cost, especially taking advantage of the maximum opportunity to harvest, as efficiently as possible, a variety of usable species in the Copper Basin CSH area.
4. Participation in the pattern of taking or use of wild resources that occurs in the Copper Basin CSH area due to close ties to the area and a familiarity with the terrain and associated history of the Copper Basin CSH area.
5. Use of means of processing and preserving wild resources from the Copper Basin CSH area that have traditionally been used by past generations, including use of all of the parts required to be removed from the field under the terms of a Copper Basin Moose CSH permit.
6. Participation in the pattern of taking or use of wild resources from the Copper Basin CSH area that includes the handing down of knowledge of hunting skills, values, and lore about the Copper Basin CSH area from generation to generation. The board considered it critical to the perpetuation of the customary and traditional use pattern to provide opportunities for the young and old to participate in subsistence activities; the board also found it extremely important to stress the need to pass on skills and knowledge associated with use of all parts of the harvested animal.
7. Participation in the pattern of taking wild resources from the Copper Basin CSH area in which the harvest is shared throughout the community, including customary trade, barter, and gift-giving.

To observe this pattern, a portion of the edible products of moose taken under the terms of a Copper Basin Moose CSH hunt should be primarily shared, in a meaningful way, with other members of the community or group. Hunters should also demonstrate a pattern of meaningful communal sharing that provides first for the needs of the community or group elders and disabled, as identified by the community or group. In addition, hunters who have harvested their first moose should give a portion to other members of the community or group.

8. Participation in the pattern that includes taking, use, and reliance for subsistence purposes not only on Nelchina caribou and moose, but also on a wide variety of wild resources in the Copper Basin area.

REPORTING

HARVEST TICKET REPORTS

Successful harvest ticket holders must report in person or by phone (907-822-3461) within 24 hours of kill. Harvest ticket holders who did not hunt, or were unsuccessful, must mail, report online, or call in Copper Basin CSH harvest reports to ADF&G within 15 days of the close of the season. Reports must be complete to meet reporting requirements.

Failure to report may jeopardize sustained yield management of Copper Basin moose and the future of the CSH hunt; therefore, failure to report according to this schedule may result in citation and/or placement of harvest ticket holders on the state Failure to Report (FTR) list. If a group member is placed on the FTR list during the first year of the group's two-year commitment requirement, the group member will still be locked

into the CSH hunt conditions, prohibiting them from hunting outside the Copper Basin CSH for moose and

caribou during the next regulatory year, and he or she will not be able to participate in CSH hunting activities.

GROUP COORDINATOR REPORTS

To better address the subsistence needs of Copper Basin Caribou CSH participants, the board required that all moose harvested by CSH participants within the CSH area be accounted for, regardless of whether taken under federal or state regulations.

In order for the department to ensure that permittees have complied with all regulations addressing the terms and conditions of their Copper Basin Caribou CSH permit, as well as the customary and traditional use pattern described in 2006-170-BOG, and in order to gather additional data on subsistence uses, the community or group coordinator must submit an Annual Coordinator Community Harvest Report, which summarizes the group's success in the hunt as well as a description of the communal pattern observed by participants. Group coordinator reports can be found online at <http://hunt.alaska.gov/>, requested by mail, or in person at an ADF&G office.

Group coordinator reports must be postmarked by January 31, 2023. If the group coordinator report is not submitted by the community or group coordinator by the due date all group participants will be placed on the FTR list and will not be eligible to participate in the CSH hunt during the following regulatory year. All CSH hunting restrictions still apply to any member on the FTR list while the community or group is in the required two-year commitment period.

Some information in these reports may be subject to state confidentiality laws.

HOUSEHOLD REPORTS

Households are requested to complete a Household Community Harvest Report provided by the department. Group coordinators should encourage each household in the group to complete a household questionnaire as well. Completed household reports should be sent to the group coordinator and included in the group report.

Deliver or mail group coordinator and household reports to:

ADF&G-WC
P.O. Box 47
Glennallen, AK 99588

FOR MORE INFORMATION

Visit www.adfg.alaska.gov for more information or contact Glennallen ADF&G 822-3461.

The Alaska Department of Fish and Game (ADF&G) administers all programs and activities free from discrimination based on race, color, national origin, age, sex, religion, marital status, pregnancy, parenthood, or disability. The department administers all programs and activities in compliance with Title VI of the Civil Rights Act of 1964, Section 504 of the Rehabilitation Act of 1973, Title II of the Americans with Disabilities Act of 1990, the Age Discrimination Act of 1975, and Title IX of the Education Amendments of 1972.

If you believe you have been discriminated against in any program, activity, or facility please write: ADF&G ADA Coordinator, P.O. Box 115526, Juneau, AK 99811-5526 ; U.S. Fish and Wildlife Service, 4401 N. Fairfax Drive, MS 2042, Arlington, VA 22203; Office of Equal Opportunity, U.S. Department of the Interior, 1849 C Street NW MS 5230, Washington DC 20240.

The department's ADA Coordinator can be reached via phone at the following numbers: (VOICE) 907-465-6077; (Statewide Telecommunication Device for the Deaf) 1-800-478-3648; (Juneau TDD) 907-465-3646; (FAX) 907-465-6078; For information on alternative formats and questions on this publication, please contact the ADF&G Division of Wildlife Conservation at P.O. Box 115526, Juneau, AK, 99811-5526 or (907) 465- 4176.

For the 2021 hunting year (August 20, 2021 - September 20, 2021), community coordinators of a community subsistence hunt are required to complete this report, which asks questions relevant to community subsistence hunt (CSH) use patterns of the Copper Basin MOOSE CSH area, as defined in 2006-170-BOG. The Copper Basin CSH coordinator report must be complete in order to be compliant with regulation. Return the completed report and CSH household reports using the enclosed postage-paid envelope to: Alaska Department of Fish and Game, Division of Wildlife Conservation-R4, PO Box 47, Glennallen, AK 99588-0047, postmarked by January 31, 2022.

COMMUNITY/GROUP NAME: _____

MOOSE

1.) How many MOOSE were harvested by members of your CSH community/group in during the 2021 hunting year (August 20, 2021 - September 20, 2021)?

2a.) If households in your CSH community/group are not successful in harvesting MOOSE in the Copper Basin MOOSE CSH area what do they do for meat? Check all that apply.

- Obtain from relatives
- Obtain from tribal office
- Obtain from CSH group/ community members
- Hunt for MOOSE elsewhere
- Purchase meat
- Hunt/fish outside Copper Basin MOOSE CSH area
- Other (describe) _____

2b.) If households in your CSH community/group are not successful in harvesting other resources, small/large game, game birds, salmon, and other non salmon fish in the Copper Basin MOOSE CSH area, what do they do for meat?

Check all that apply

- Obtain from relatives
- Obtain from tribal office
- Obtain from CSH community/group members
- Purchase meat
- Hunt/fish outside Copper Basin MOOSE CSH area
- Other (describe) _____

3.) What are the top 3 reasons members of your CSH community/group use the Copper Basin MOOSE CSH area? (List the most important first)

- 1 - _____
- 2 - _____
- 3 - _____

4.) What efforts are CSH community/group members making to continue or establish a generational pattern of use in the Copper Basin MOOSE CSH area? Approximately how many years has the average CSH community/group member used the Copper Basin MOOSE CSH area? (limit to 1 paragraph)

5.) Describe an example where youth from households in your CSH community/group, aged 0-16, actively participated in hunting, fishing, trapping, or gathering activities in the Copper Basin MOOSE CSH area during 2021 (January 2021 - December 2021).

... CONTINUED FROM PREVIOUS PAGE

6.) 2021 (January 2021 - December 2021) CSH community/group sharing event(s)

6a.) How many sharing events did your CSH community/group have that included MOOSE harvested in the Copper Basin CSH?

6b.) What percentage of your CSH community/group members were present at sharing events?

6c.) What percent of attendees of your sharing events were not part of your CSH community/group?

6d.) Please briefly describe the CSH community/group sharing event(s). _____

7.) Approximately how much of each MOOSE was retained by CSH community/group members from 2021 (August 20, 2021 - September 20, 2021) harvests? _____

8.) What strategies did members of your CSH group employ to reduce fuel consumption to increase economic efficiency for trips to the Copper Basin MOOSE CSH area in 2021 (January 1, 2021 - December 31, 2021)?

9.) How did members of your CSH community/group pool resources (equipment, supplies) to increase efficiency for trips to the Copper Basin MOOSE CSH area in 2021 (January 2021 - December 2021)?

10.) Describe the methods used for processing the MOOSE your CSH community/group harvested during the 2021 hunting year (August 20, 2021 - September 20, 2021; ex: commercial processor, family, self, other CSH community/group members). Specify the parts of the MOOSE processed and how they were used. _____

11.) Describe other activities members of your CSH community/group use the Copper Basin MOOSE CSH area for, detailing when these activities occur throughout the year (January 2021 - December 2021) and species harvested.

- Hunt for other large/small game/birds _____
- Fish for salmon/non-salmon fish _____
- Trap _____
- Pick berries/greens _____
- Other (ex: recreational purposes) _____



ADF&G COPPER BASIN COMMUNITY SUBSISTENCE HUNT (CSH)

GUIDE TO FILLING OUT THE COORDINATOR REPORT – MOOSE FOR 2021

For assistance, contact Jackie Keating, ADF&G Division of Subsistence, at 907-267-2368 or at jacqueline.keating@alaska.gov

The Copper Basin CSH coordinator report must be complete in order to be compliant with regulation. Attach additional sheets if necessary.

Provide your CSH community/group name in the space provided above Question 1.

Question 1

Include only the number of MOOSE harvested (shot) by members of your CSH community/group during the 2021 hunting year (August 20, 2021 – September 20, 2021). Do not include MOOSE harvested by individuals not in your CSH community/group even if members of your CSH community/group were present for the harvest.

The intent of Question 1 is to compare to household responses so as to note any discrepancies.

Questions 2a & 2b

Check all options that apply for your CSH community/group members. The patterns these questions attempt to identify are the replacement of some portion of unavailable subsistence resources with other subsistence resources available in the area and the expected sharing of resources from successful households.

The intent of these questions is to identify that the CSH community/group is establishing **or** continuing a pattern of use that relies on the Copper Basin MOOSE CSH area. This, in part, addresses Element 1 (long-term consistent pattern of use), Element 7 (sharing within the community), and Element 8 (use of a wide variety of resources from the area) of the customary and traditional use patterns described by the Alaska Board of Game findings at 2006-170-BOG and in regulation at 5 AAC 92.072(c)(3).

Question 3

In order to accurately answer this question, it will be important that the CSH community/group coordinator contact CSH community/group members and/or collect and review household report forms.

The intent of this question is to identify which elements, if any, of the customary and traditional use patterns as described in 2006-170-BOG and at 5 AAC 92.072(c)(3) are most important to the CSH community/group.

Question 4

Describe how your CSH community/group has established or continues to participate in consistent, patterns of non-commercial taking, use, and reliance on wild resources in the Copper Basin MOOSE CSH area that hand down use and knowledge from generation to generation. Describe how many years on average CSH community/group members have used the Copper Basin MOOSE CSH area. Include in your description the average number of years CSH community/group members have used the Copper Basin MOOSE area.

The intent of this question is to identify that the CSH community/group is establishing **or** continuing a pattern of generational involvement in subsistence activities in the Copper Basin MOOSE CSH area. This, in part, addresses Element 4 (close ties to and familiarity with the area) and Element 6 (handing down of knowledge and skills across generations) of the customary and traditional use patterns described in 2006-170-BOG and at 5 AAC 92.072(c)(3).

Question 5

In your description of youth participation in hunting, fishing, trapping, or gathering activities in the Copper Basin MOOSE CSH area in 2021 (January 2021 – December 2021), include how your CSH community/group's senior member(s) are involved in the process of passing down knowledge of the Copper Basin MOOSE CSH area, its wild resources, and of the skills required to harvest and process wild resources of the area.

The intent of this question is to identify that the CSH community/group is establishing **or** continuing a pattern of generational involvement, where children are being taught methods of hunting, fishing and processing. This, in part, addresses Element 6 (handing down of knowledge and skills across generations) of the customary and traditional use patterns described in 2006-170-BOG and at 5 AAC 92.072(c)(3).

Questions 6a-6d

Provide information on CSH community/group sharing events that included harvested Copper Basin CSH MOOSE and that occurred in 2021 (January 2021 – December 2021). For Question 6b, provide an estimated percentage of members from your CSH community/group that attended the sharing event(s). For Question 6c, provide an estimated percentage of people **not** from your CSH community/group that attended the sharing event(s). For Question 6d, describe the sharing event in terms of date, location, number of attendees, amount/parts of MOOSE shared, and overall description.

The intent of these questions is to identify that the CSH community/group is establishing **or** continuing a pattern of community sharing that involves a community sharing event. This, in part, addresses Element 7 (sharing within the community) of the customary and traditional use patterns described in 2006-170-BOG and at 5 AAC 92.072(c)(3).

Question 7

Provide information on the average amount of MOOSE that each household in your CSH community/group retained from 2021 (August 20, 2021 – September 20, 2021) harvests.

The intent of this question is to identify that the amount of MOOSE harvested in CSH activities that is shared within the CSH community/group in part with Element 7 (sharing within the community) of the customary and traditional use patterns described in 2006-170-BOG and at 5 AAC 92.072(c)(3).

Questions 8 & 9

Include in your description items such as number of trips taken, means of transportation into the field by each community/group member for each resource, and time spent in the field during 2021 (January 2021 – December 2021). These questions have been framed around fuel costs because described hunting patterns in the area involve extensive use of roadways as hunting corridors as well as efficiency in sharing the cost of equipment.

The intent of these questions is to identify that the CSH community/group is establishing **or** is continuing a pattern of hunting that involves strategies to reduce cost and increase efficiency. This, in part, addresses Element 3 (efficiency) of the customary and traditional use patterns described in 2006-170-BOG and at 5 AAC 92.072(c)(3).

Question 10

Provide information on who processed the meat that members of your CSH community/group harvested. Processing involves preparing the meat from the field to a form ready for human consumption. For each animal harvested, describe how all parts required to be removed from the field were processed and how they were used. The description should cover MOOSE harvested during the 2021 hunting year (August 20, 2021 – September 20, 2021).

The intent of this question is to identify that the community/group is establishing **or** is continuing a pattern of use in the Copper Basin MOOSE CSH area consistent in part with Element 5 (thorough use of parts of animal) of the customary and traditional use patterns described in 2006-170-BOG and at 5 AAC 92.072(c)(3).

Question 11

For each activity listed (hunting, fishing, trapping, picking berries/greens, other) provide information such as species harvested, organized activities, and the season/month CSH community/group members participated during 2021 (January 2021 – December 2021).

The intent of this question is to identify that the CSH community/group is establishing **or** is continuing a pattern of use in the Copper Basin MOOSE CSH area consistent in part with Element 2 (seasonal pattern of harvests within the area), Element 4 (close ties to and familiarity with the area), and Element 8 (use of a wide variety of resources from the area) of the customary and traditional use patterns described in 2006-170-BOG and at 5 AAC 92.072(c)(3).

Helpful Links

Alaska Board of Game finding 2006-170-BOG:

This finding is the intent of the Board of Game in providing the Copper Basin CSH opportunity

<http://www.adfg.alaska.gov/static/regulations/regprocess/gameboard/pdfs/findings/06170bog.pdf>

Alaska Department of Fish and Game Community Subsistence Hunt Group Management website

This website has a portal for Coordinator access, as well as hunt conditions, and a link to 5 AAC 92.072

<http://www.adfg.alaska.gov/index.cfm?adfg=huntlicense.cultural>

Alaska Department of Fish and Game ADA/OEO statement:

The State of Alaska is an Affirmative Action/Equal Opportunity Employer. Contact Jackie Keating for alternative formats of this publication.

http://www.adfg.alaska.gov/index.cfm?adfg=home.ada_statement

COPPER BASIN COMMUNITY SUBSISTENCE HUNT HOUSEHOLD REPORT- MOOSE

GROUP NUMBER:

For the 2021 hunting year (August 20, 2021 - September 20, 2021), households participating in the community subsistence hunt are being asked to complete this report. The questions in this report apply to all members of the household, even if they are not registered as part of a community subsistence hunt (CSH) community/group. Responses on these report will not be used to determine hunt eligibility for individuals or households. Please share this report with your community/group coordinator by October 31, 2021.

FILL OUT THIS FORM, EVEN IF MEMBERS OF YOUR HOUSEHOLD DID NOT HUNT IN 2021 HUNTING YEAR (August 20, 2021 - September 20, 2021)

COMMUNITY/GROUP NAME: _____

1.) How many people live in your household? (include all members, even those that are not signed up as a part of your CSH community/group)

2.) Please fill in the following information for each member of your household for the last 12 months (November 2020 - October 2021), even if they did not participate in hunting, fishing or gathering activities in the 2021 hunting year (August 20, 2021 - September 20, 2021) or are not registered participants of the CSH for MOOSE

Person #	In WHAT YEAR was this person born?	Registered CSH member?	Hunting License # (if applicable)	Thinking of only your activities in the COPPER BASIN MOOSE CSH AREA in 2020/2021, did members of your household....													
				HUNT FOR...				FISH FOR...		PICK		PROCESS...					
				Moose	Caribou	Other Game	Birds	Salmon	Fish other than salmon	TRAP	Berries / Greens	Moose	Caribou	Other Game	Birds	Fish	Berries / Greens
1	YEAR	<input type="checkbox"/>		<input type="checkbox"/>	<input type="checkbox"/>	<input type="checkbox"/>	<input type="checkbox"/>	<input type="checkbox"/>	<input type="checkbox"/>	<input type="checkbox"/>	<input type="checkbox"/>	<input type="checkbox"/>	<input type="checkbox"/>	<input type="checkbox"/>	<input type="checkbox"/>	<input type="checkbox"/>	<input type="checkbox"/>
2	YEAR	<input type="checkbox"/>		<input type="checkbox"/>	<input type="checkbox"/>	<input type="checkbox"/>	<input type="checkbox"/>	<input type="checkbox"/>	<input type="checkbox"/>	<input type="checkbox"/>	<input type="checkbox"/>	<input type="checkbox"/>	<input type="checkbox"/>	<input type="checkbox"/>	<input type="checkbox"/>	<input type="checkbox"/>	<input type="checkbox"/>
3	YEAR	<input type="checkbox"/>		<input type="checkbox"/>	<input type="checkbox"/>	<input type="checkbox"/>	<input type="checkbox"/>	<input type="checkbox"/>	<input type="checkbox"/>	<input type="checkbox"/>	<input type="checkbox"/>	<input type="checkbox"/>	<input type="checkbox"/>	<input type="checkbox"/>	<input type="checkbox"/>	<input type="checkbox"/>	<input type="checkbox"/>
4	YEAR	<input type="checkbox"/>		<input type="checkbox"/>	<input type="checkbox"/>	<input type="checkbox"/>	<input type="checkbox"/>	<input type="checkbox"/>	<input type="checkbox"/>	<input type="checkbox"/>	<input type="checkbox"/>	<input type="checkbox"/>	<input type="checkbox"/>	<input type="checkbox"/>	<input type="checkbox"/>	<input type="checkbox"/>	<input type="checkbox"/>
5	YEAR	<input type="checkbox"/>		<input type="checkbox"/>	<input type="checkbox"/>	<input type="checkbox"/>	<input type="checkbox"/>	<input type="checkbox"/>	<input type="checkbox"/>	<input type="checkbox"/>	<input type="checkbox"/>	<input type="checkbox"/>	<input type="checkbox"/>	<input type="checkbox"/>	<input type="checkbox"/>	<input type="checkbox"/>	<input type="checkbox"/>
6	YEAR	<input type="checkbox"/>		<input type="checkbox"/>	<input type="checkbox"/>	<input type="checkbox"/>	<input type="checkbox"/>	<input type="checkbox"/>	<input type="checkbox"/>	<input type="checkbox"/>	<input type="checkbox"/>	<input type="checkbox"/>	<input type="checkbox"/>	<input type="checkbox"/>	<input type="checkbox"/>	<input type="checkbox"/>	<input type="checkbox"/>
7	YEAR	<input type="checkbox"/>		<input type="checkbox"/>	<input type="checkbox"/>	<input type="checkbox"/>	<input type="checkbox"/>	<input type="checkbox"/>	<input type="checkbox"/>	<input type="checkbox"/>	<input type="checkbox"/>	<input type="checkbox"/>	<input type="checkbox"/>	<input type="checkbox"/>	<input type="checkbox"/>	<input type="checkbox"/>	<input type="checkbox"/>
8	YEAR	<input type="checkbox"/>		<input type="checkbox"/>	<input type="checkbox"/>	<input type="checkbox"/>	<input type="checkbox"/>	<input type="checkbox"/>	<input type="checkbox"/>	<input type="checkbox"/>	<input type="checkbox"/>	<input type="checkbox"/>	<input type="checkbox"/>	<input type="checkbox"/>	<input type="checkbox"/>	<input type="checkbox"/>	<input type="checkbox"/>
9	YEAR	<input type="checkbox"/>		<input type="checkbox"/>	<input type="checkbox"/>	<input type="checkbox"/>	<input type="checkbox"/>	<input type="checkbox"/>	<input type="checkbox"/>	<input type="checkbox"/>	<input type="checkbox"/>	<input type="checkbox"/>	<input type="checkbox"/>	<input type="checkbox"/>	<input type="checkbox"/>	<input type="checkbox"/>	<input type="checkbox"/>
10	YEAR	<input type="checkbox"/>		<input type="checkbox"/>	<input type="checkbox"/>	<input type="checkbox"/>	<input type="checkbox"/>	<input type="checkbox"/>	<input type="checkbox"/>	<input type="checkbox"/>	<input type="checkbox"/>	<input type="checkbox"/>	<input type="checkbox"/>	<input type="checkbox"/>	<input type="checkbox"/>	<input type="checkbox"/>	<input type="checkbox"/>

How many times did any members of your household go out each month in the Copper Basin MOOSE CSH area for the following activities in the last 12 months (November 2020 - October 2021)? (include any trip where a single member of the household went out, even if they went with another household)

	November	December	January	February	March	April	May	June	July	August	September	October
3a.) Fishing	<input type="text" value="# TRIPS"/>	<input type="text" value="# TRIPS"/>	<input type="text" value="# TRIPS"/>	<input type="text" value="# TRIPS"/>	<input type="text" value="# TRIPS"/>	<input type="text" value="# TRIPS"/>	<input type="text" value="# TRIPS"/>	<input type="text" value="# TRIPS"/>	<input type="text" value="# TRIPS"/>	<input type="text" value="# TRIPS"/>	<input type="text" value="# TRIPS"/>	<input type="text" value="# TRIPS"/>
3b.) Hunting	<input type="text" value="# TRIPS"/>	<input type="text" value="# TRIPS"/>	<input type="text" value="# TRIPS"/>	<input type="text" value="# TRIPS"/>	<input type="text" value="# TRIPS"/>	<input type="text" value="# TRIPS"/>	<input type="text" value="# TRIPS"/>	<input type="text" value="# TRIPS"/>	<input type="text" value="# TRIPS"/>	<input type="text" value="# TRIPS"/>	<input type="text" value="# TRIPS"/>	<input type="text" value="# TRIPS"/>
3c.) Trapping	<input type="text" value="# TRIPS"/>	<input type="text" value="# TRIPS"/>	<input type="text" value="# TRIPS"/>	<input type="text" value="# TRIPS"/>	<input type="text" value="# TRIPS"/>	<input type="text" value="# TRIPS"/>	<input type="text" value="# TRIPS"/>	<input type="text" value="# TRIPS"/>	<input type="text" value="# TRIPS"/>	<input type="text" value="# TRIPS"/>	<input type="text" value="# TRIPS"/>	<input type="text" value="# TRIPS"/>
3d.) Pick berries / greens	<input type="text"/>	<input type="text"/>	<input type="text"/>	<input type="text"/>	<input type="text"/>	<input type="text"/>	<input type="text"/>	<input type="text"/>	<input type="text"/>	<input type="text"/>	<input type="text"/>	<input type="text"/>

... CONTINUED FROM PREVIOUS PAGE

	Left over from previous year's hunt	Harvested ourselves	Received from another member of your CSH community/group	Received from someone else	Didn't get any MOOSE
4.) What was the source of your household's MOOSE you used in the last 12 months (November 2020 - October 2021)? Check all that apply.	<input type="checkbox"/>	<input type="checkbox"/>	<input type="checkbox"/>	<input type="checkbox"/>	<input type="checkbox"/>
5.) Did members of your household attend one or more CSH community/group sharing events that involved CSH MOOSE in the last 12 months (November 2020 - October 2021)? (such as a potlatch, community event) <i>(if yes, then describe one ...)</i>	Y / N <i>(circle one)</i>				
5a.) When did the CSH community/group sharing event occur?	<input type="text" value="MM/DD/YYYY"/>	5b.) Describe the sharing event _____			
5c.) About how many of your CSH community/group members were present?	<input type="text" value="# PEOPLE"/>	5d.) About how many people not in your CSH community/group were present?		<input type="text" value="# PEOPLE"/>	

Questions 6 - 13g cover the 2021 hunting year (August 20, 2021 - September 20, 2021)
(if none of your household members hunted for MOOSE this year, skip to Question 14)

6.) How many times did members of your household go hunting for MOOSE in the 2021 hunting year?

7.) Not including household members, how many people in your CSH community/group did you hunt MOOSE with in the 2021 hunting year?

8.) Were any of your household's 2021 MOOSE hunting trips combined with the following activities? Check all that apply, leave blank if not combined.

	Other hunting	Fishing	Trapping	Picking berries/greens
	<input type="checkbox"/>	<input type="checkbox"/>	<input type="checkbox"/>	<input type="checkbox"/>

9.) How many MOOSE did members of this household harvest in the 2021 hunting year? *(include only those MOOSE SHOT BY members of your household)*

10.) How many MOOSE harvested by your household were taken by youth, age 16 and younger in the 2021 hunting year? *(include only those MOOSE SHOT BY youth from your household)*

11.) On average, about how much of each MOOSE harvested did your household retain from 2021 harvests? (circle one)

	NONE	1/4 moose	1/2 moose	3/4 moose	ALL	OTHER Describe: _____
--	------	--------------	--------------	--------------	-----	--------------------------

12.) Who processed the meat your household harvested? _____
(ex: Commercial processor, family member, self, other CSH community/group member(s) etc...)

For members of your household, briefly describe how each of the following parts of MOOSE harvested in the 2021 Copper Basin CSH hunt were used; please note if the parts were not used.

13a.) Bones <i>(including backbone)</i> _____	13e.) Ribs _____
13b.) Hide _____	13f.) Heart _____
13c.) Stomach _____	13g.) Liver _____
13d.) Head _____	13h.) Kidneys _____

... CONTINUED FROM PREVIOUS PAGE

14.) Have members of your family always used the Copper Basin MOOSE CSH area for hunting, fishing, trapping, and berry/green picking activities? Y / N (circle one)

14a.) What is the earliest year any member of your family started using the Copper Basin MOOSE CSH area for hunting, fishing, trapping, and berry/green picking activities?

14b.) Do members of your household participate in hunting, fishing, trapping or berry/green picking activities in the Copper Basin MOOSE CSH area: Every year Most years Some years Once or twice Never (circle one)

15.) Do any of your family members own or rent property in the Copper Basin MOOSE CSH area, including homes, cabins, undeveloped land or recreational property? Y / N (circle one)

16.) Hunting/Trapping activities OUTSIDE of the Copper Basin MOOSE CSH area.
Include ALL units customarily used by members of your HOUSEHOLD, for hunting and trapping except those portions of units covered by the Copper Basin MOOSE CSH area

List other game management units customarily used for hunting by members of your household, even if those household members are not members of your Copper Basin MOOSE CSH community/group.	Are uses of these units Routine / Occasional / Rare	How many members of your household use or have used other areas?
16a.) Moose	<input type="text"/>	<input type="text" value="# PEOPLE"/>
16b.) Caribou	<input type="text"/>	<input type="text" value="# PEOPLE"/>
16c.) Other Game	<input type="text"/>	<input type="text" value="# PEOPLE"/>
16d.) Birds	<input type="text"/>	<input type="text" value="# PEOPLE"/>
16e.) Trapping	<input type="text"/>	<input type="text" value="# PEOPLE"/>

17.) Fishing activities OUTSIDE of the Copper Basin MOOSE CSH area.
Include ALL areas customarily used by members of your HOUSEHOLD for fishing, except those areas and fisheries within the Copper Basin MOOSE CSH area

List water bodies or fisheries customarily used by members of your household, even if those household members are not a part of your Copper Basin MOOSE CSH community/group.	Are use of these areas Routine / Occasional / Rare	How many members of your household use or have used other areas?
17a.) Salmon	<input type="text"/>	<input type="text" value="# PEOPLE"/>
17b.) Trout	<input type="text"/>	<input type="text" value="# PEOPLE"/>
17c.) Whitefish	<input type="text"/>	<input type="text" value="# PEOPLE"/>
17d.) Other fish	<input type="text"/>	<input type="text" value="# PEOPLE"/>



ADF&G COPPER BASIN COMMUNITY SUBSISTENCE HUNT (CSH)

GUIDE TO FILLING OUT THE HOUSEHOLD REPORT - MOOSE 2021

For assistance, contact Jackie Keating, ADF&G Division of Subsistence, at 907-267-2368 or at jacqueline.keating@alaska.gov

Attach additional sheets if necessary.

Question 1

Members of your household should include all individuals who live in the household more than six months out of the year on a consistent basis and who you would consider a permanent member of your household, including students who are away for school. Include all members, even those that are not signed up as part of your CSH community/group.

The intent of this question is to identify the total number of individuals living in a household, regardless of age or whether or not that individual has been registered as part of the CSH community/group.

Question 2

Provide information for each member of your household listed in Question 1, even if they did not participate in hunting, fishing, or gathering activities in the 2021 hunting year (August 20, 2021 – September 20, 2021) or are not registered participants of the MOOSE CSH. If a member of the household held a hunting license in 2021, please provide their hunting license number. Only activities that took place within the Copper Basin MOOSE CSH area during the last 12 months (November 2020 – October 2021) should be considered when providing information on activities in which household members participated.

The intent of this question is to identify that the CSH community/group is establishing **or** is continuing a pattern of use in the Copper Basin MOOSE CSH area consistent in part with Element 1 (long-term consistent pattern of use), Element 2 (seasonal pattern of harvests within the area), Element 4 (close ties to familiarity with the area), Element 6 (handing down of knowledge and skills across generations), and Element 8 (use of a wide variety of resources from the area) of the customary and traditional use patterns described by the Alaska Board of Game findings at 2006-170-BOG and in regulation at 5 AAC 92.072.(c)(3).

Questions 3a-3d

For each activity listed (fishing, hunting, trapping, picking berries/greens) provide the total number of trips taken each month to the Copper Basin MOOSE CSH area in the last 12 months (November 2020 – October 2021) by all members of your household, including any trip where a single member of the household went out, even if they were with another household.

The intent of this question is to identify that the CSH community/group is establishing **or** is continuing a pattern of use in the Copper Basin MOOSE CSH area consistent in part with Element 2 (seasonal pattern of harvest within the area), Element 4 (close ties to and familiarity with the area), and Element 8 (use of a wide variety of resources from the area) of the customary and traditional use patterns described in 2006-170-BOG and at 5 AAC 92.072(c)(3).

Question 4

Provide information on the source of the MOOSE that your household has used in the last 12 months (November 2020 – October 2021). Check all boxes that apply.

The intent of this question is to identify that the CSH community/group is establishing **or** is continuing a pattern of use in the Copper Basin MOOSE CSH area consistent in part with Element 7 (sharing within the community) of the customary and traditional use patterns described in 2006-170-BOG and at 5 AAC 92.072(c)(3).

Questions 5-5d

If members of your household attended at least one CSH community/group sharing event that included MOOSE harvested from this hunt in the last 12 months (November 2020 – October 2021), such as a potlatch or other community event, provide an estimated number of events attended and proceed to answer Questions 5a-5d. If no, skip to Question 6 and leave questions 5a-5d blank.

If yes, for Question 5c, provide an estimated number of members from your CSH group that attended the sharing event described in Question 5b. For Question 5d, provide the number of members who attended the sharing event, described in Question 5b, that were **not** from your CSH community/group.

The intent of this question is to identify that the community/group is establishing **or** is continuing a pattern of use in the Copper Basin MOOSE CSH area consistent in part with Element 7 (sharing within the community) of the customary and traditional use patterns described in 2006-170-BOG and at 5 AAC 92.072(c)(3).

Question 6

Skip this question if members of your household did not hunt for MOOSE in the 2021 hunting year, enter “zero” in the box, and go to Question 14.

If members of your household did hunt for MOOSE, provide the total number of trips taken for all members during the 2021 hunting season. Hunting trips should be included regardless of success.

The intent of this question is to identify that the community is establishing **or** is continuing a pattern of use in the Copper Basin MOOSE CSH area consistent in part with Element 4 (close ties to and familiarity with the area) of the customary and traditional use patterns described in 2006-170-BOG and at 5 AAC 92.072(c)(3).

Question 7

Skip this question if members of your household did not hunt for MOOSE during the 2021 hunting year (August 20, 2021 – September 20, 2021), enter “zero” in the box, and go to Question 8 (if you did hunt for moose as indicated in Question 6).

If members of your household did hunt for MOOSE, provide the total number of people who were **not** part of your CSH community/group and who went on hunting trips with any members of your household.

The intent of this question is to identify that the community is establishing **or** is continuing a pattern of use in the Copper Basin MOOSE CSH area consistent in part with Element 3 (efficiency) of the customary and traditional use patterns described in 2006-170-BOG and at 5 AAC 92.072(c)(3). Working closely with other hunters, and combining resources, such as equipment and transportation is an effective way to reduce costs and improve hunting efficiency.

Question 8

Indicate any other activities (other hunting, fishing, trapping, picking berries/greens) that members of your household engaged in that were combined with any of your household's MOOSE hunting trips during the 2021 hunting year (August 20, 2021 – September 20, 2021). For the purpose of this question, hunting trips and other activities should be indicated regardless of success. If no trips were combined, leave blank.

The intent of this question is to identify that the community/group is establishing **or** is continuing a pattern of use in the Copper Basin MOOSE CSH area consistent in part with Element 3 (efficiency), and Element 8 (use of a wide variety of resources from the area) of the customary and traditional use patterns described in 2006-170-BOG and at 5 AAC 92.072(c)(3). Harvesting multiple resources while searching for MOOSE is an effective way to combine trips to reduce costs.

Question 9

Provide the number of MOOSE harvested (shot) by members of your household only during the 2021 hunting year (August 20, 2021 – September 20, 2021). If members of your household were part of a successful hunting party but did not shoot the MOOSE that was harvested do not include these MOOSE in the total for Question 9.

This question will be used to compare household and coordinator reports.

Question 10

Provide the number of MOOSE harvested (shot), by members of your household only who at the time of the harvest were aged 16 years or younger during the 2021 hunting year (August 20, 2021 – September 20, 2021). If members of your household aged 16 years or younger were part of a successful hunting party but did not shoot the MOOSE that was harvested do not include these MOOSE in the total for Question 10. If youth did not shoot any moose, write zero in the box.

The intent of this question is to identify that the community/group is establishing **or** is continuing a pattern of use in the Copper Basin MOOSE CSH area consistent in part with Element 6 (handing down of knowledge and skills across generations) of the customary and traditional use patterns described in 2006-170-BOG and at 5 AAC 92.072(c)(3). Harvest of MOOSE by youth indicates transfer of knowledge to subsequent generations, in order to maintain community harvest and use patterns.

Question 11

Estimate the average amount of MOOSE that was retained by your household from all hunts during the 2021 hunting year (August 20, 2021 – September 20, 2021) in which your household shot the MOOSE

that was harvested and circle the closest amount. Do not include in your average the amount of MOOSE that was given to you by another household.

The intent of this question is to identify that the community is establishing **or** is continuing a pattern of use in the Copper Basin MOOSE CSH area consistent in part with Element 7 (sharing within the community) of the customary and traditional use patterns described in 2006-170-BOG and at 5 AAC 92.072(c)(3).

Question 12

Provide information on who processed the CSH MOOSE meat that your household harvested during the 2021 hunting year (August 20, 2021 – September 20, 2021). Processing involves preparing the meat from the field to a form ready for human consumption.

The intent of this question is to identify that the community/group is establishing **or** is continuing a pattern of use in the Copper Basin MOOSE CSH area consistent in part with Element 3 (efficiency) of the customary and traditional use patterns described in 2006-170-BOG and at 5 AAC 92.072(c)(3).

Questions 13a-13h

Provide a brief description of how members of your household only used the listed parts of the MOOSE harvested by your household during the 2021 hunting year (August 20, 2021 – September 20, 2021). Examples include making bone broth, tanning the hide, and eating the liver). If a part or parts were not used by the household, note on the form “not used”.

The intent of this question is to identify that the community/group is establishing **or** continuing a pattern of use that includes the use of all parts of the MOOSE required to be taken from the field. This, in part, addresses Element 3 (efficiency) and Element 5 (thorough use of parts of animal) of the customary and traditional use patterns described in 2006-170-BOG and at 5 AAC 92.072(c)(3).

Questions 14 – 14b

When answering these questions, think about the date that members of your family (including your extended family, parents, and grandparents) started using the Copper Basin CSH area for hunting, fishing, trapping, and/or berry/green picking. An example of “No” response for Question 14 might involve a family who, even after living in Alaska for decades or longer, began using the Copper Basin CSH area within the last 1-3 years (in other words, not “always”). Question 14a also includes any member of your family, including your extended family, parents, and grandparents. Question 14b is specific to members of your household only; circle only one time period.

The intent of these questions is to identify that the community/group is establishing **or** continuing a long term pattern of use, including close ties to and familiarity with the area. This, in part, addresses Element 1 (long-term consistent pattern of use) and Element 4 (close ties to and familiarity with the area) of the customary and traditional use patterns described in 2006-170-BOG and at 5 AAC 92.072(c)(3).

Question 15

The intent of this question is to identify that the community is establishing **or** continuing a pattern of close ties to and familiarity with the area. This, in part, addresses Element 4 (close ties to and familiarity with the area) of the customary and traditional use patterns described in 2006-170-BOG and at 5 AAC 92.072(c)(3).

Questions 16a-17d

List only those game management units (GMUs) that are OUTSIDE the Copper Basin CSH area that have been used customarily for hunting and fishing by members of your household through the lifetime of your eldest household members or through multiple family generations. When answering this question, include all years that your household has customarily used the GMUs for hunting and fishing.

Questions 16a-16e address hunting and trapping, and questions 17a-17d address fishing.

Examples of "routine" use would include using the GMU as a primary area for hunting/fishing activities on a seasonal/yearly basis; "occasional" use would include using the GMU as a secondary area for hunting/fishing activities on a seasonal/yearly basis; "rare" use of the GMU would include sporadic and/or limited use of the area in which the area is not consistently a primary or secondary area of use for hunting/fishing activities.

The intent of these questions is to identify that the community/group is establishing **or** continuing a pattern of reliance of the Copper Basin MOOSE CSH area for hunting a wide variety of species. This, in part, addresses Element 8 (use of wide variety of resources from the area) of the customary and traditional use patterns described in 2006-170-BOG and at 5 AAC 92.072(c)(3).

Helpful Links

Alaska Board of Game finding 2006-170-BOG:

This finding is the intent of the Board of Game in providing the Copper Basin CSH opportunity

<http://www.adfg.alaska.gov/static/regulations/regprocess/gameboard/pdfs/findings/06170bog.pdf>

Alaska Department of Fish and Game Community Subsistence Hunt Group Management website

This website has a portal for Coordinator access, as well as hunt conditions, and a link to 5 AAC 92.072

<http://www.adfg.alaska.gov/index.cfm?adfg=huntlicense.cultural>

Alaska Department of Fish and Game ADA/OEO statement:

The State of Alaska is an Affirmative Action/Equal Opportunity Employer. Contact Jackie Keating for alternative formats of this publication.

http://www.adfg.alaska.gov/index.cfm?adfg=home.ada_statement