

Submitted by the Alaska Department of Fish and Game  
March 3, 2017

**Substitute Language for Proposal 84.**

This RC corrects waypoints for the closed waters at the mouth of the Kenai River.

**5 AAC 21.330. Gear.**

5 AAC 21.330(b)(3)(C) is amended to read:

(3) Central District: set gillnets may be used only in the following waters:

...

(C) waters along the east coast in the Central District

(i) within one mile of the mean high tide mark from the northern boundary of the district to the northern ADF&G regulatory marker at the mouth of the Kenai River at 60° 34.24' N. lat., 151° 18.99' W. long. then offshore on a bearing of 235° to a point one mile from the mean high tide mark **at 60° 33.66' N. lat., 151° 20.66' W. long.;**

(ii) from the latitude of the southern ADF&G regulatory marker at the mouth of the Kenai River at 60° 30.49' N. lat., 151° 16.80' W. long. **offshore approximately one and one-half miles to a point at 60° 30.49' N. lat., 151° 19.86' W. long.** to the latitude of the northern ADF&G regulatory marker at the mouth of the Kasilof River at 60° 24.23' N. lat., 151° 17.66' W. long. **offshore approximately one and one-half miles to a point at 60° 24.23' N. lat., 151° 20.68' W. long.** and only within one and one-half miles of the mean high tide mark;

(iii) from the southern ADF&G regulatory marker at the mouth of the Kasilof River at 60° 22.56' N. lat., 151° 20.98' W. long. **offshore approximately one and one-half miles to a point at 60° 23.97' N. lat., 151° 22.02' W. long.** to the latitude of the ADF&G regulatory marker at the northern limit of the closed area at the mouth of the Ninilchik River at 60° 04.02' N. lat., 151° 38.90' W. long. **offshore approximately one and one-half miles to a point at 60° 04.02' N. lat., 151° 42.00' W. long.** and only within one and one-half miles of the mean high tide mark;

**5 AAC 21.350. Closed waters.**

5 AAC 21.350(b)(3) and (4) are amended to read:

(b) Central District

...

(3) Kenai River: waters enclosed by a line from the southern ADF&G regulatory marker at the mouth of the Kenai River at 60° 30.49' N. lat., 151° 16.80' W. long. to **a point approximately one and one-half miles offshore at 60° 30.49' N. lat., 151° 19.86' W. long. to a point at 60° 31.07' N. lat., 151° 19.81' W. long. to** the Coast Guard channel marker 1 KE located **approximately at 60° 31.27' N. lat., 151° 20.84' W. long.** [60° 31.30' N. lat., 151° 20.50' W. long.] **to a point at 60° 33.07' N. lat., 151° 19.72' W. long. to a point approximately one mile offshore at 60° 33.66' N. lat., 151° 20.66' W. long.** to the northern ADF&G regulatory marker at the mouth of the Kenai River at 60° 34.24' N. lat., 151° 18.99' W. long.; [AND, IN THE AREA BETWEEN A LINE BEARING 235° FROM THE NORTHERN ADF&G REGULATORY MARKER AND THE KENAI RIVER MOUTH, THOSE WATERS WITHIN ONE MILE OF THE MEAN HIGH TIDE MARK AND, IN THE AREA BETWEEN THE SOUTHERN ADF&G REGULATORY MARKER AND THE KENAI RIVER MOUTH, THOSE WATERS WITHIN ONE AND ONE-HALF MILES OF THE MEAN HIGH TIDE MARK];

(4) Kasilof River: **waters enclosed by a line** from the southern ADF&G regulatory marker located at 60° 22.56' N. lat., 151° 20.98' W. long. to **a point approximately one and one-half miles offshore at 60° 23.97' N. lat., 151° 22.02' W. long. to a point approximately one and one-half miles offshore at 60° 24.23' N. lat., 151° 20.68' W. long. to** [THE LATITUDE OF] the northern ADF&G regulatory marker located at 60° 24.23' N. lat., 151° 17.66' W. long. [AND WITHIN ONE STATUTE MILE OF THE RIVER TERMINUS];

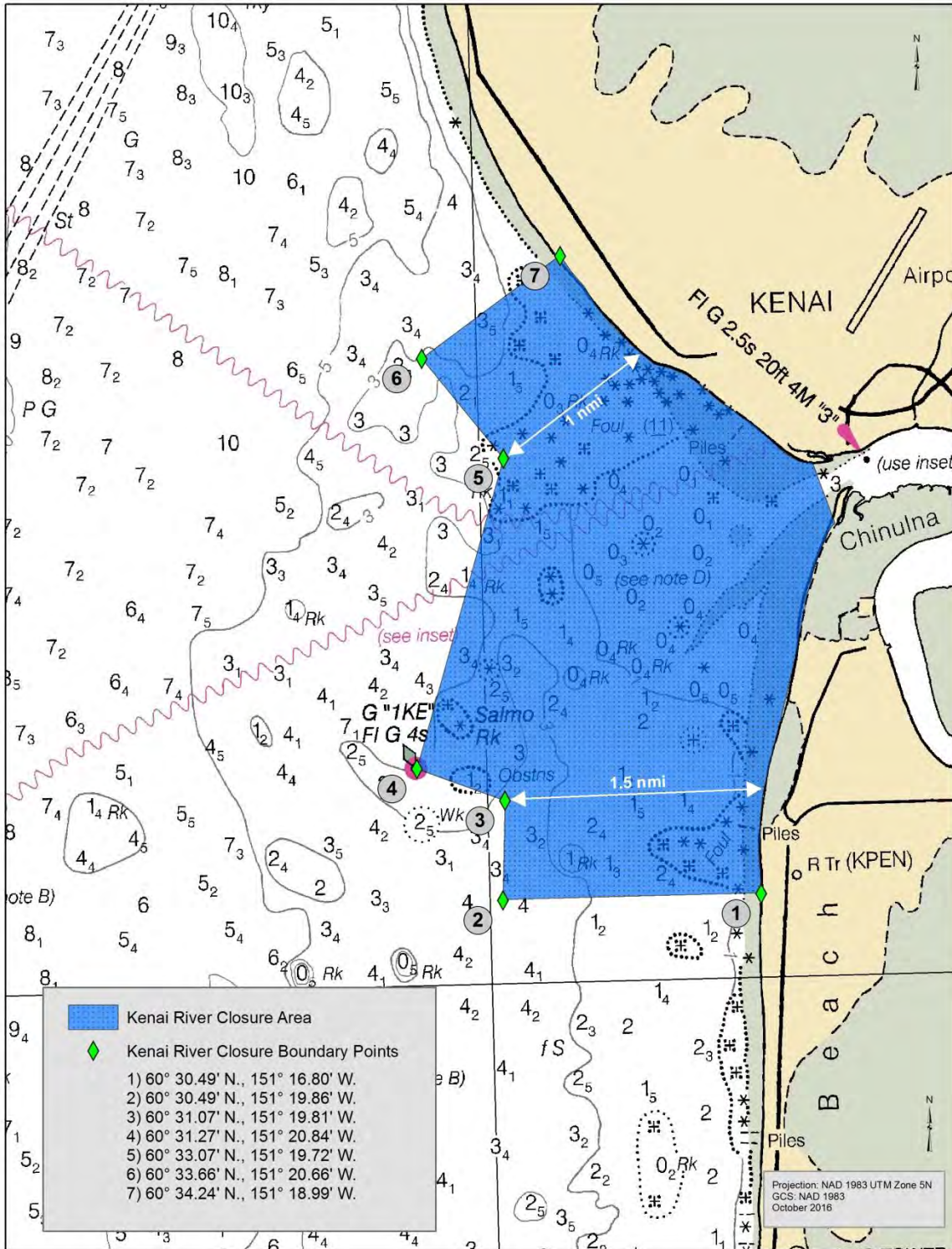


Figure 1.-Map of proposed changes (using GPS coordinates) to waters closed to commercial salmon fishing around the mouth of the Kenai River.

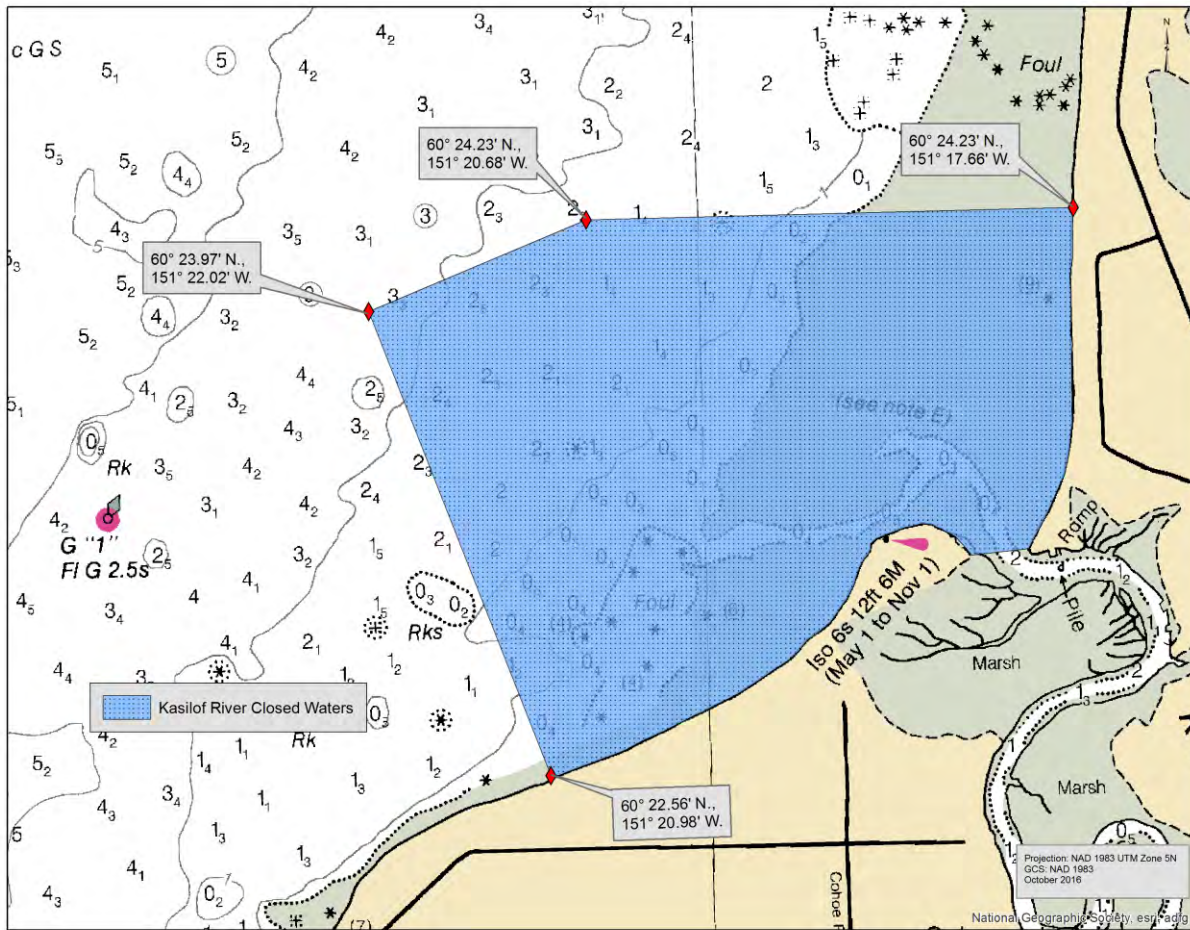


Figure 2.-Map of proposed changes (using GPS coordinates) to waters closed to commercial salmon fishing around the mouth of the Kasilof River.