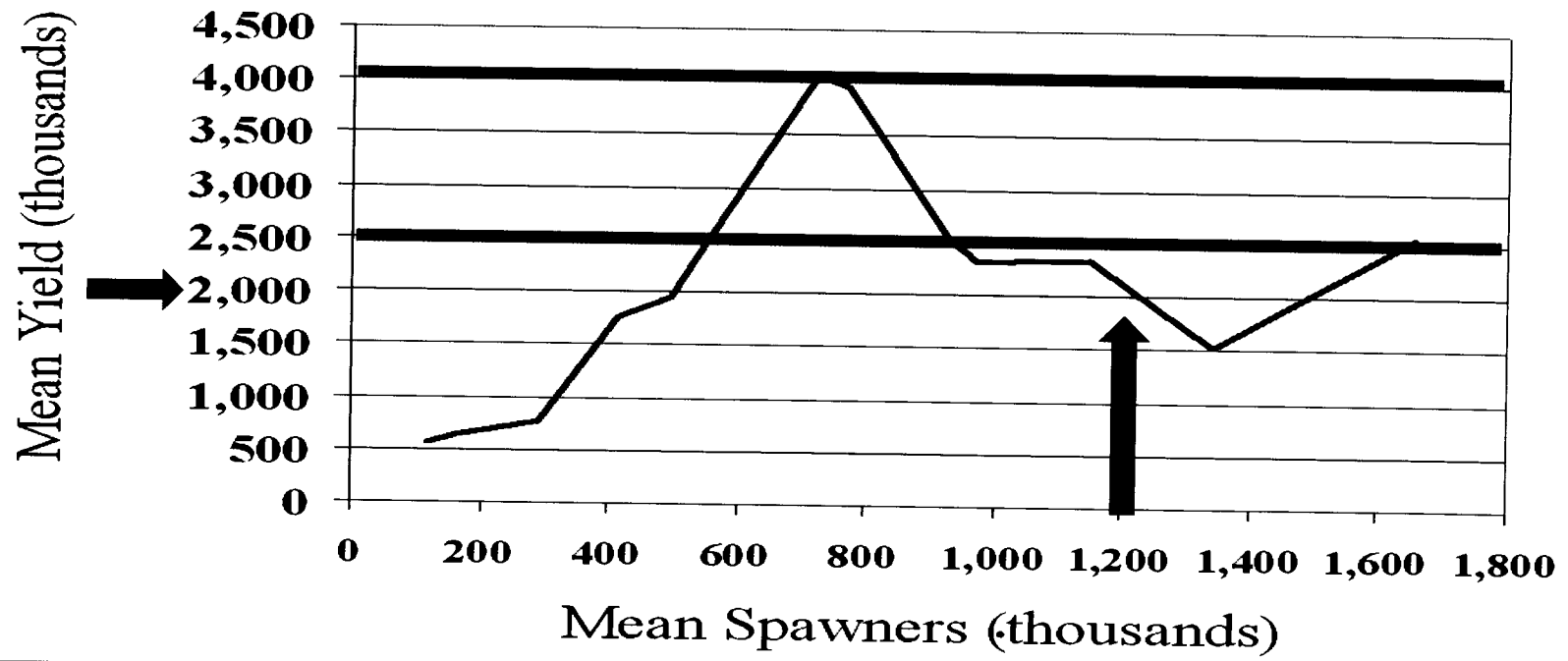


What Kenai Sockeye Salmon YIELDS Do We Want?

Mean Yield of Kenai River Sockeye Salmon at Various Spawner Densities



Future Yields are diminished on a salmon stock that the majority of Alaskans depend on.

SOCKEYE

2 Million on Sockeye return



Escapement = 1 million

Personal use and Sport Fishery = 1 million

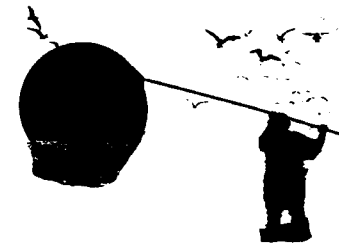
What is left for the Commercial Fishery?

Commercial Fishermen are being allocated out of the fishery.

HARVEST RATES Kenai River Sockeye

ESSN are a very

Management Tool



ESSN

Harvest **70%** of
available sockeye in a
12 hour period

Drifters

Harvest **40%** of
available sockeye in a
12 hour period

Dipnet

Harvest **30%** of
available sockeye
in a 12 hour period

Source of Data: ADF&G

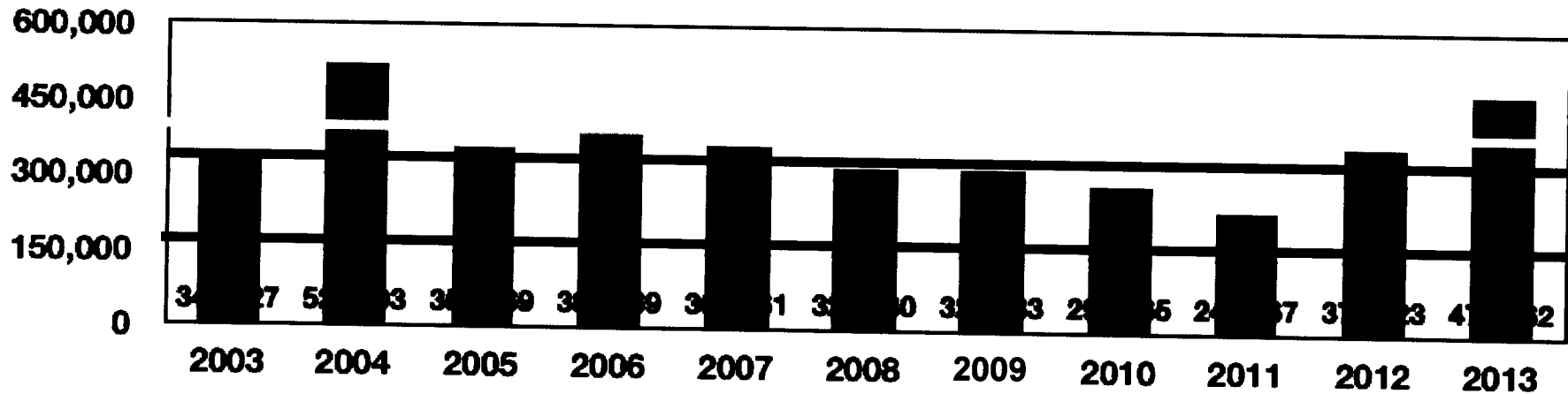
KASILOF river

Kasilof River Sockeye Goals

BEG-160,000 - 340,000

OEG-160,000 - 390,000

Kasilof River Sockeye Spawning Escapement



11 year average is 364,790

Source of Data: ADF&G

KENAI RIVER in-river sockeye fishery

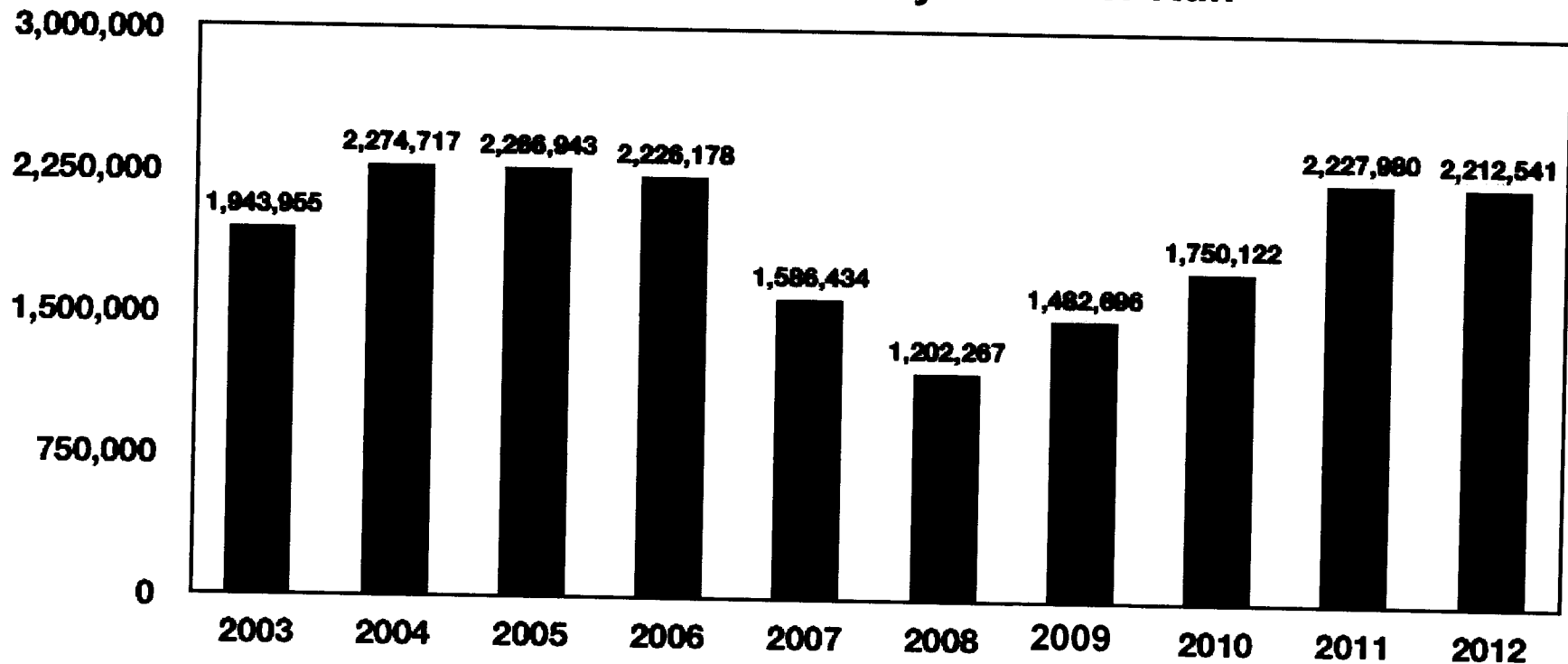


IN-RIVER sockeye

Have the Sockeye needs of the In-River fisheries been met? **YES!**

The 10 year average for Kenai Total Sockeye In-river Run is 1,917,383

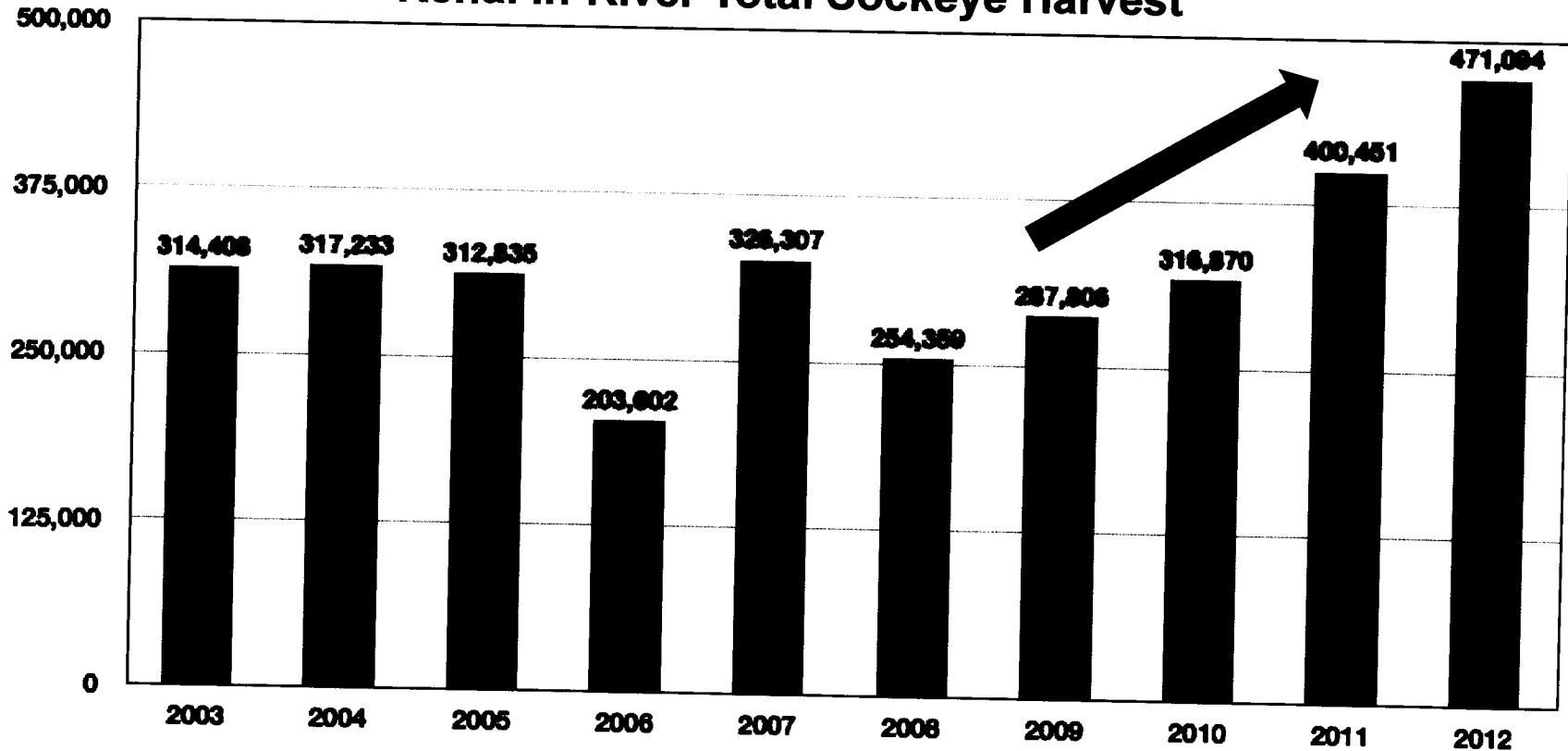
Kenai Total Sockeye In-River Run



Source of Data : ADF&G

IN-RIVER sockeye harvest

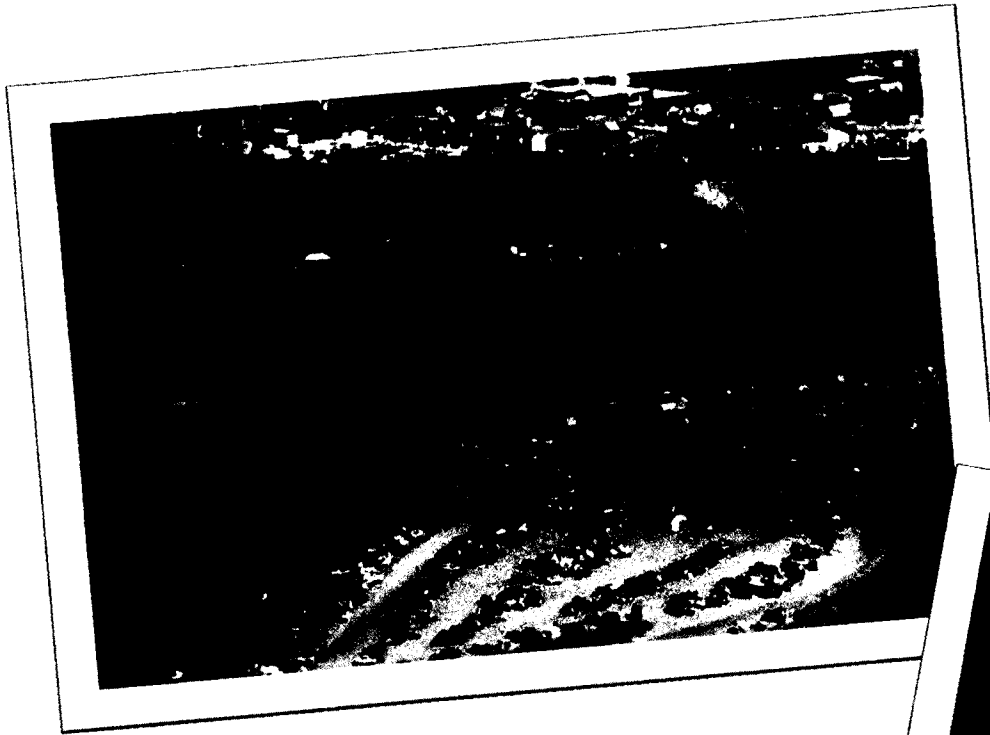
Kenai In-River Total Sockeye Harvest



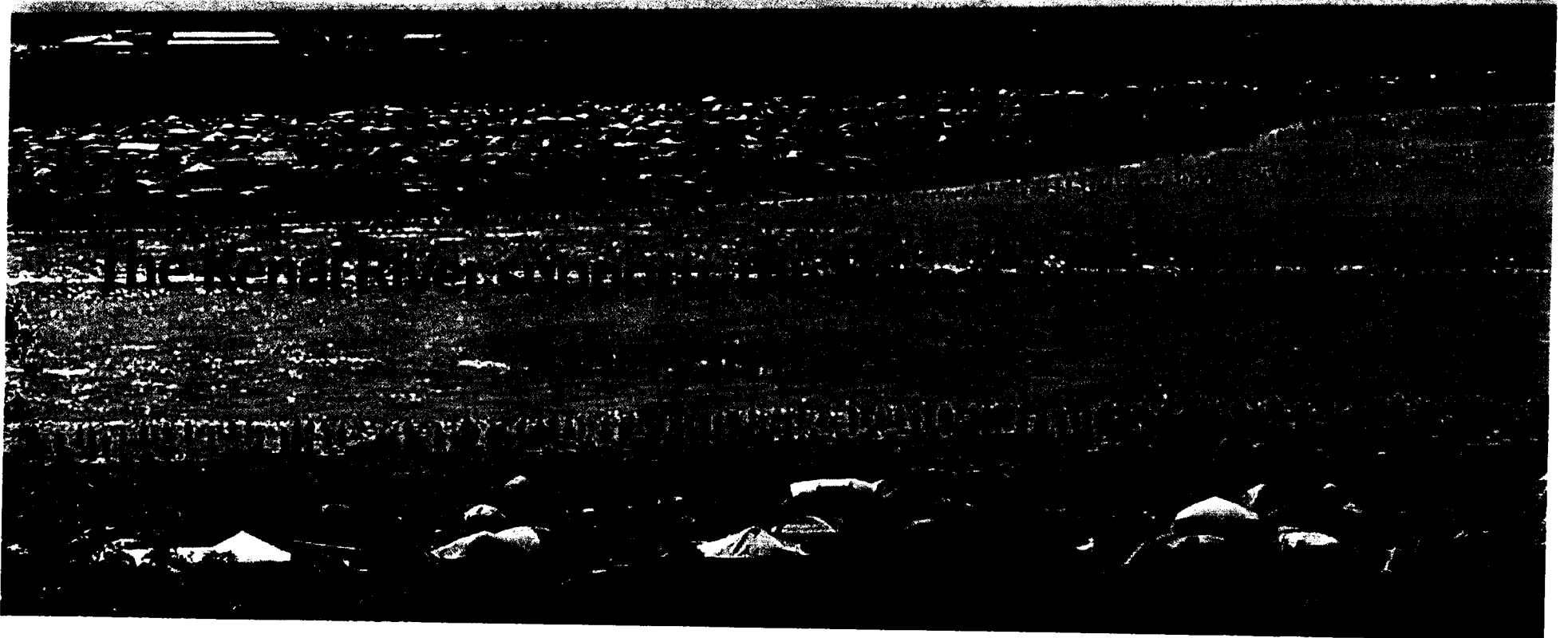
The In-river Sockeye harvest is at its highest point and has yet to harvest what has been allocated by the BOF.

Source of Data : ADF&G

PERSONAL USE FISHERY dip net

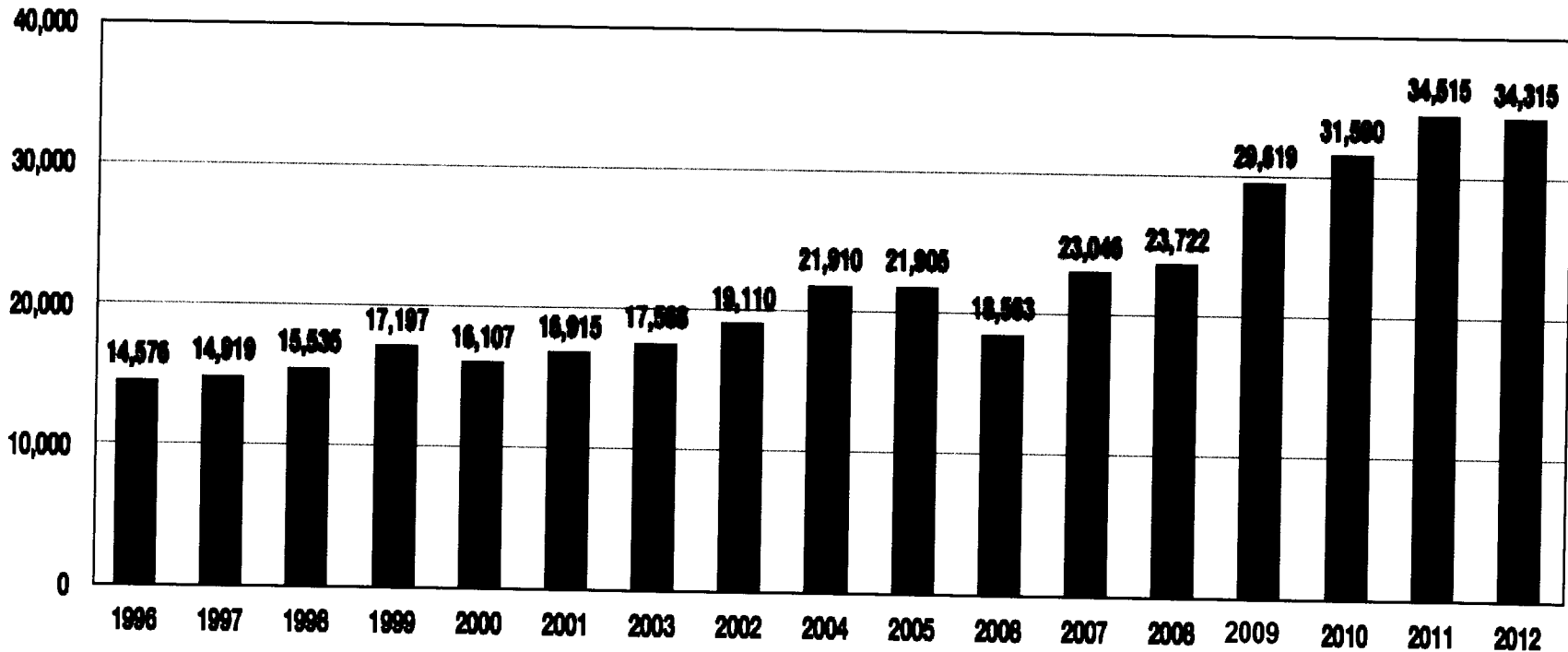


KENAI RIVER dipnet fishery



PERSONAL USE permits

Cook Inlet Personal Use Permits Issued



135%

Source of Data : ADF&G