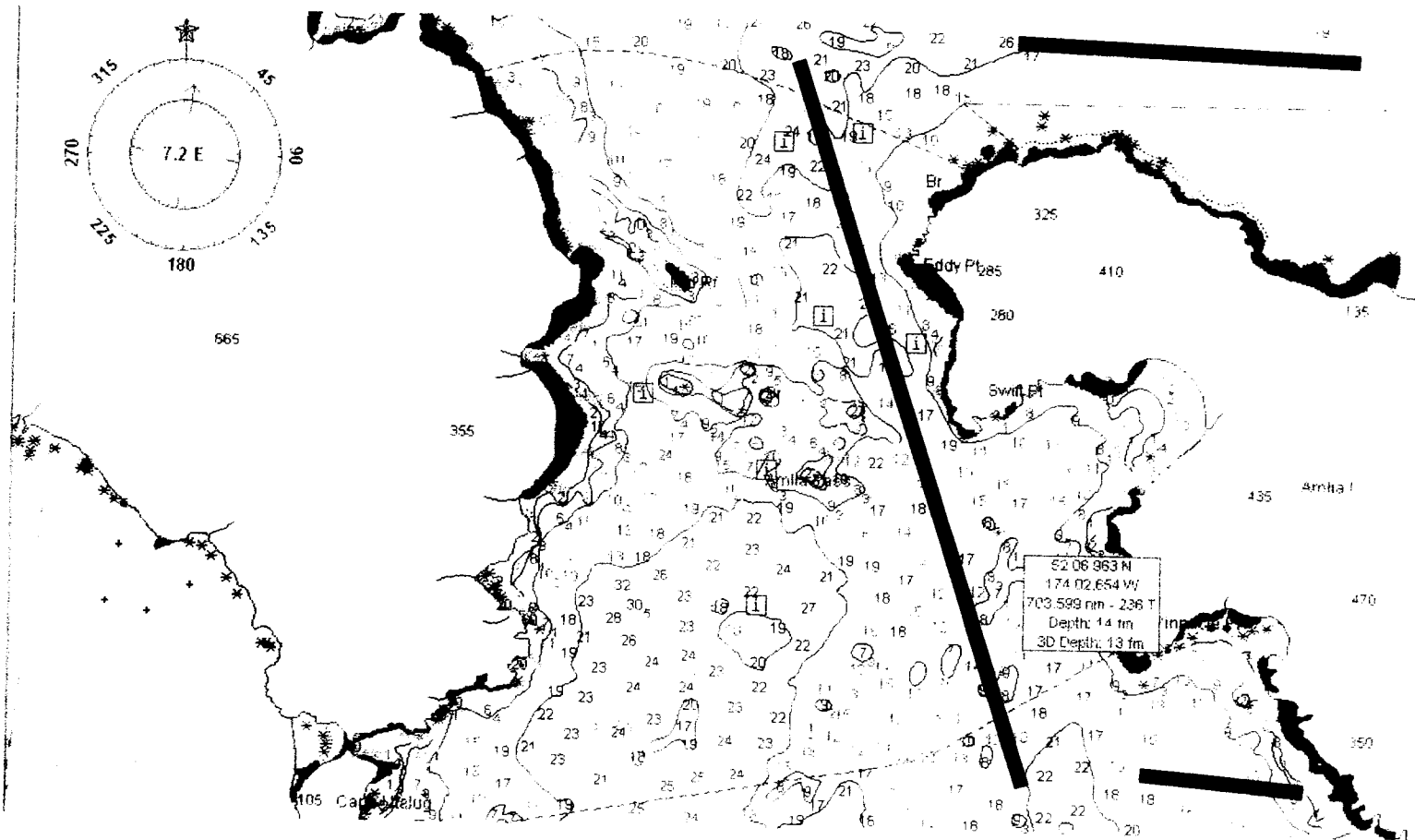


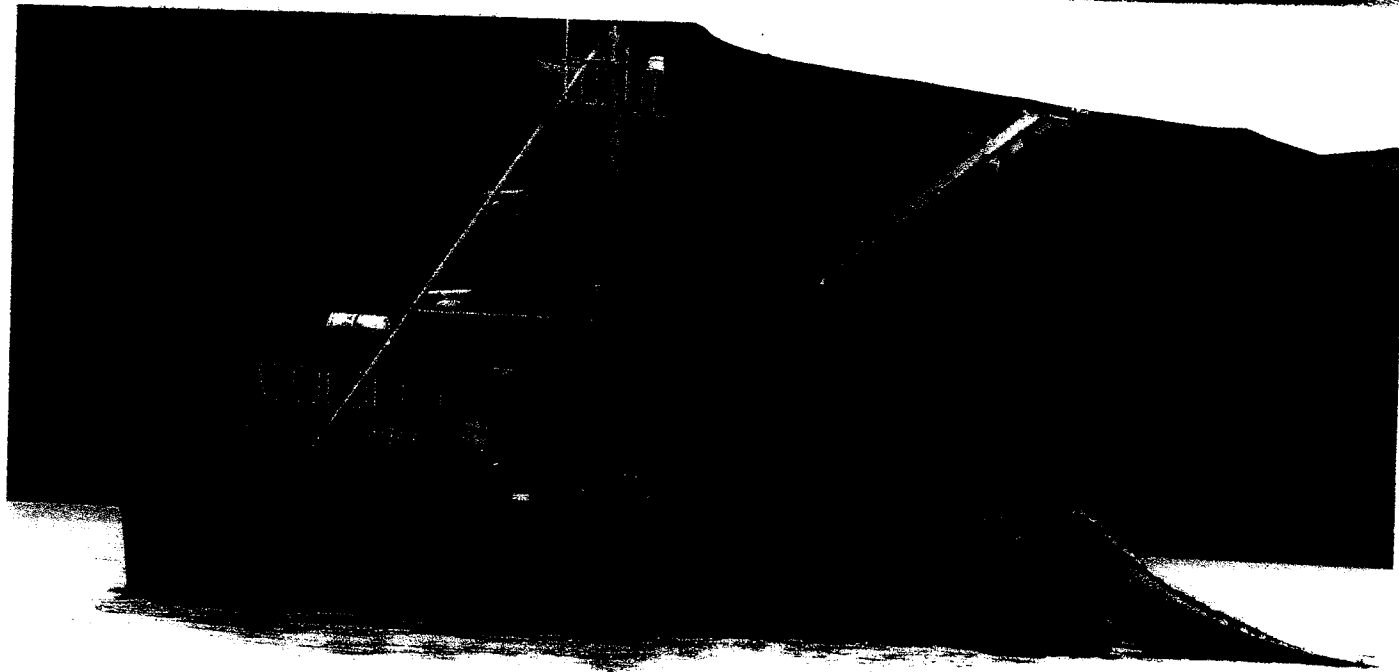
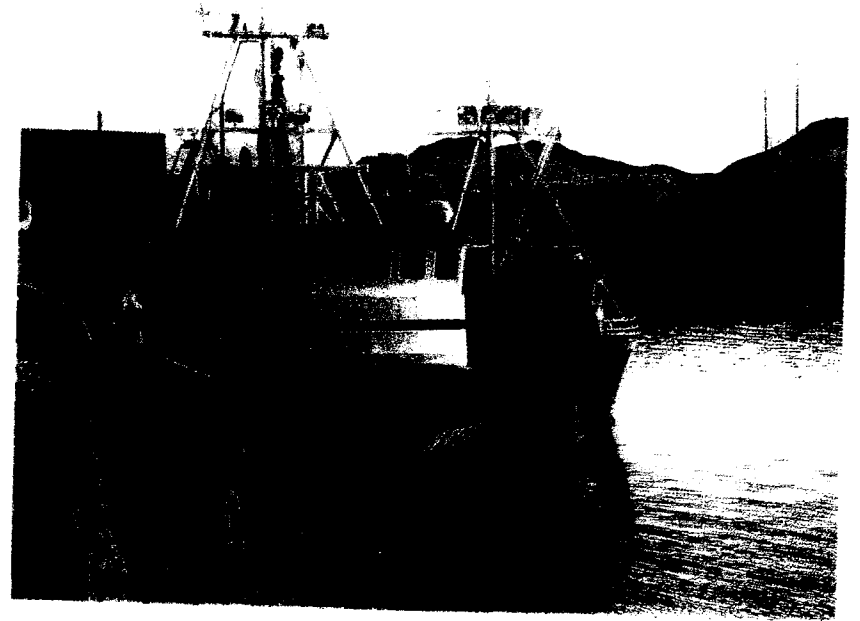
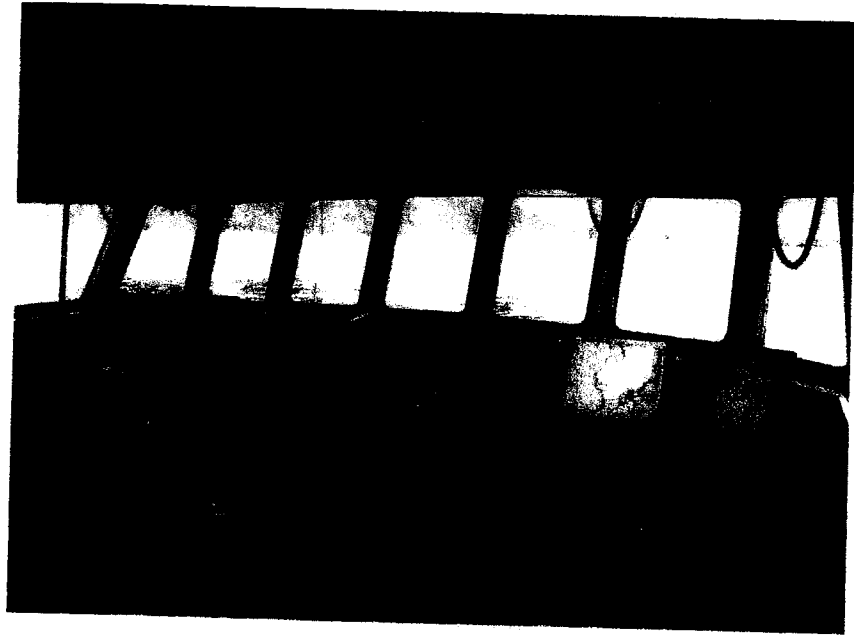
Amlia Pass (limited soundings available)



Example of strong mackerel populations



F/V Half Moon Bay



Gear recommendations cont

- ❑ A very powerful skiff would be needed to offer extra towing capabilities of the specially designed seine in the passes and areas with strong currents.
- ❑ Since the mackerel sound, a seine with a bottom layer that can easily “scoop” the mackerel when the headline is not next to the bottom would help catch the fish. The bottom of the seine should be made of the strongest material available so it won't rip if caught on a pinnacle.
- ❑ The scooping bottom layer will also trap the mackerel during a tow haul, helping better trap the mackerel within the seine.
- ❑ The seine itself needs to be made of the lightest and strongest material so that it can be towed through the water at a speed between 2 – 4 knots, or hold steady against strong currents in passes.

Gear recommendations

- ❑ Typical salmon and herring seines are insufficient to successfully catch Atka mackerel.
- ❑ Due to the mackerel's size, a mesh size between herring and salmon is optimal.
- ❑ Many schools are in very tidal areas, therefore a specially designed seine that can be towed in the passes and "cut" the water would be best.
- ❑ Since the mackerel can also live near pinnacles, a seine whose depth can be adjusted to catch the mackerel right next to the top of the pinnacle without touching it seems necessary.