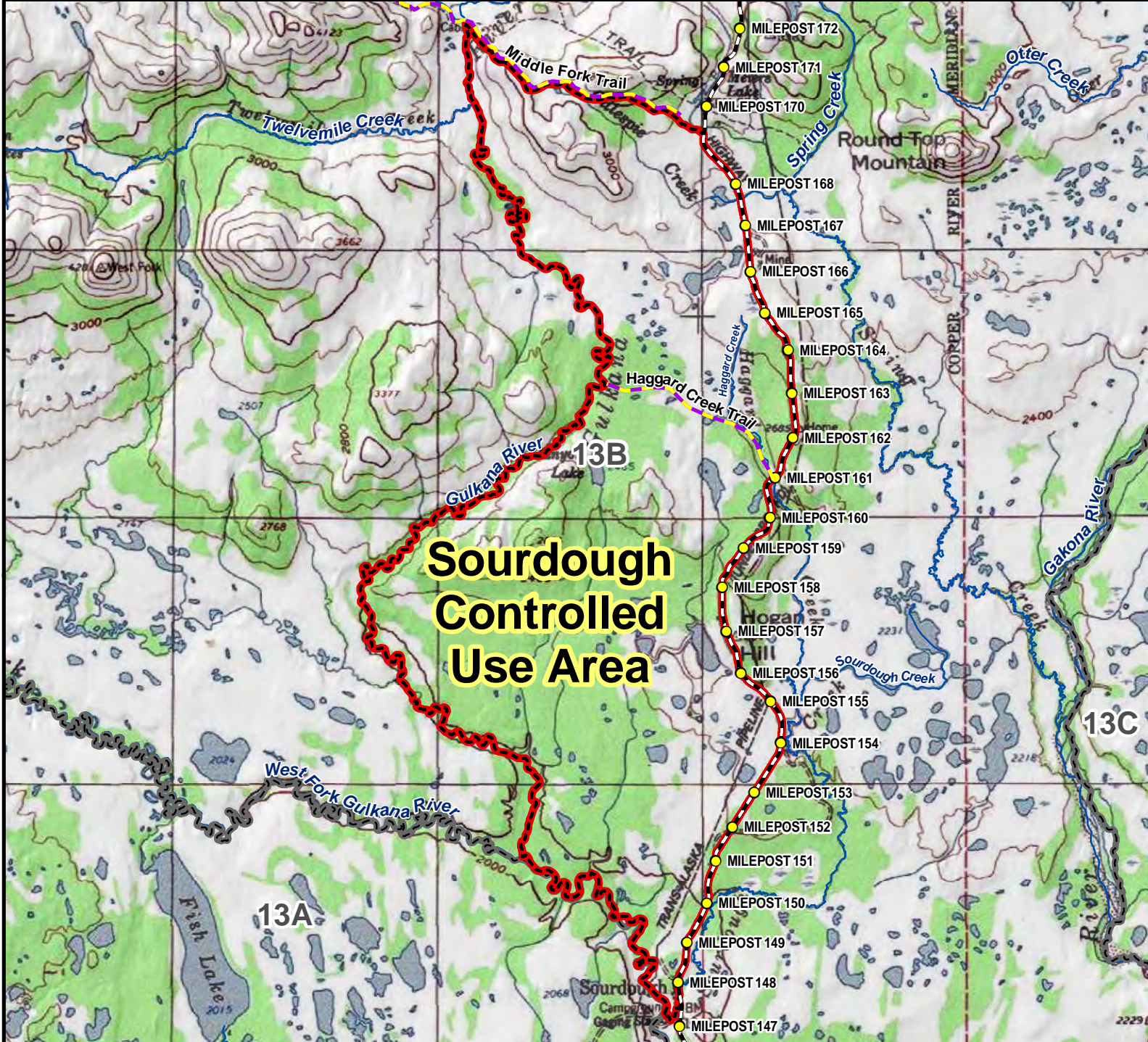


# Unit 13B Sourdough Controlled Use Area



**AREA DESCRIPTION:** Unit 13B, the area consists of that portion of Unit 13B bounded by a line beginning at the confluence of Sourdough Creek and the Gulkana River, then northerly along Sourdough Creek to approximately mile 148 of the Richardson Highway, then northerly along the Richardson Highway to the Middle Fork Trail at approximately mile 170 of the Richardson Highway, then westerly along the trail to the Gulkana River, then southerly along the east bank of the Gulkana River to its confluence with Sourdough Creek, the point of beginning.

The area is closed to the use of any motorized vehicle for hunting, including the transportation of hunters, their hunting gear, or parts of game; however, this provision does not prohibit motorized access, or transportation of game, on the Richardson Highway, Gulkana River, Sourdough Creek Campground or boat launch, Sourdough and Haggard Creeks, Middle Fork, and Haggard Creek trails, or other trails designated by the department.

**Reason for the Special Area:**  
This controlled use area was created in 1971 to provide moose and caribou hunting opportunities for individuals without off-road vehicles (ORVs). As competition increased for moose and caribou in the late 1960s, it became evident that there was a substantial demand for areas to hunt without having to compete with ORVs. The Sourdough Controlled Use Area provides a large hunting area accessible from the Richardson Highway where moose and caribou can be found in fair numbers and roadside hunters have a reasonable chance for success.

N

0 1.5 3 6 Miles

- Controlled Use Area
- Subunit Boundary
- Closed Area
- Management Area
- National Park/Monument
- National Wildlife Refuge
- Military Closure
- Other State Areas
- Closed to Hunting

