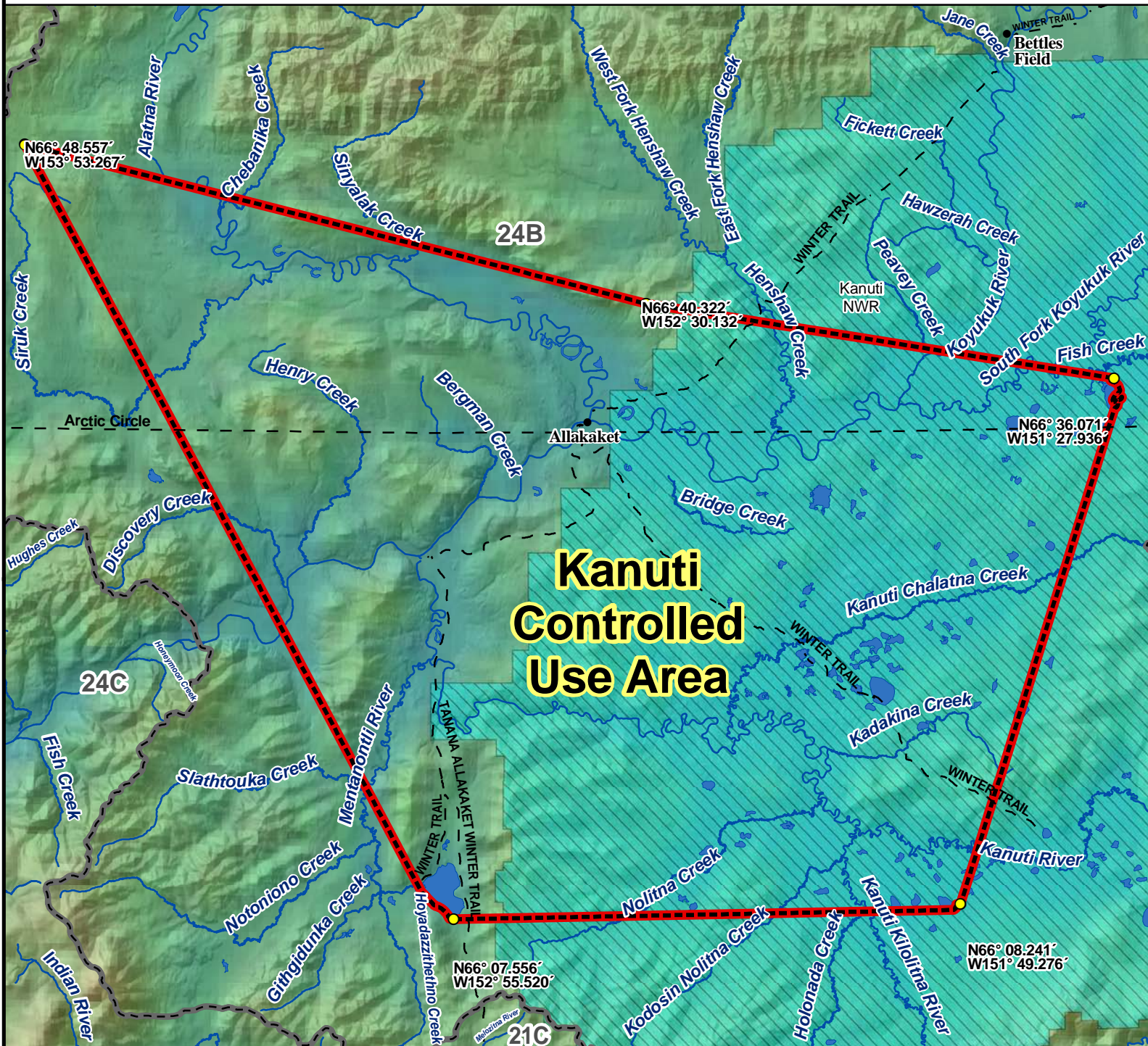


Unit 24B Kanuti Controlled Use Area



Kanuti Controlled Use Area

AREA DESCRIPTION: Unit 24B, the area consists of that portion of Unit 24 bounded by a line from a point at the northernmost headwaters of Siruk Creek at 66° 48.557' N. lat., 153° 53.267' W. long., to the highest peak of Double Point Mountain at 66° 40.322' N. lat., 152° 30.132' W. long., to the northern end of Fish Creek Lake, including all waters of the lake, at 66° 36.071' N. lat., 151° 27.936' W. long., to the east side of Old Dummy Lake, including all waters of the lake, at 66° 08.241' N. lat., 151° 49.276' W. long., to the south end of Lake Todatonten, including all waters of the lake, at 66° 07.556' N. lat., 152° 55.520' W. long., then back to the point of origination at Siruk Creek.

The area is closed to the use of aircraft for hunting moose, including the transportation of moose hunters, their hunting gear, or parts of moose; however, this provision does not apply to the transportation of moose hunters, their hunting gear, or parts of moose by aircraft between

