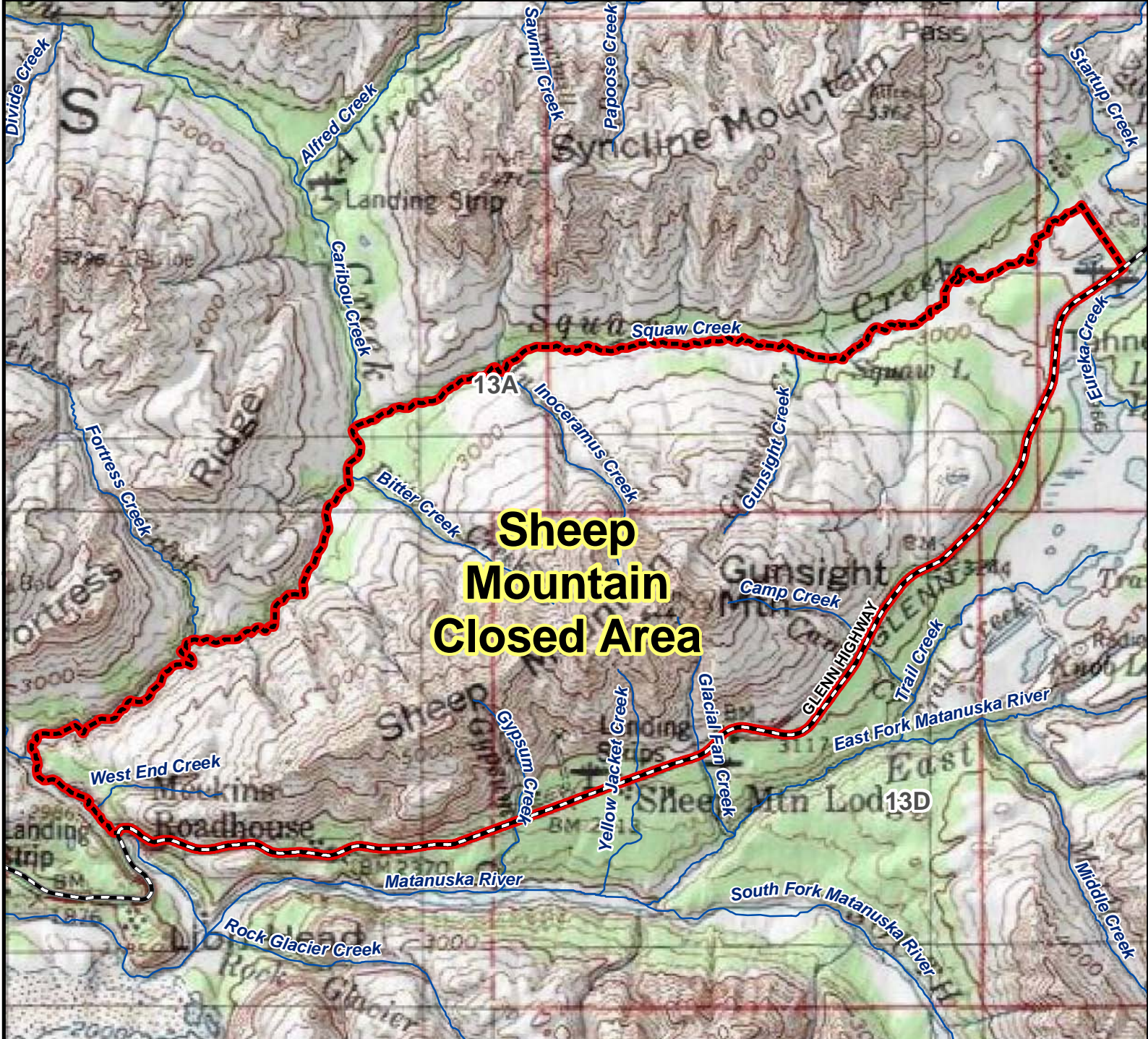


Unit 13A Sheep Mountain Closed Area



Sheep Mountain Closed Area

AREA DESCRIPTION: Unit 13A, the Sheep Mountain Closed Area which lies along the Glenn Highway in Unit 13A and is bounded by a line from Caribou Creek, Milepost 107 Glenn Highway, then easterly along the Glenn Highway to Milepost 123, then north to Squaw Creek, then downstream to Caribou Creek, then down Caribou Creek to the point of beginning.

The area is closed to the taking of mountain goat and Dall sheep.

Reason for Closure

A 14-mile view, much of it unobstructed, of the southern face of the mountain offers motorists one of the few opportunities in Alaska to observe large numbers of Dall sheep. The closure predates statehood.

