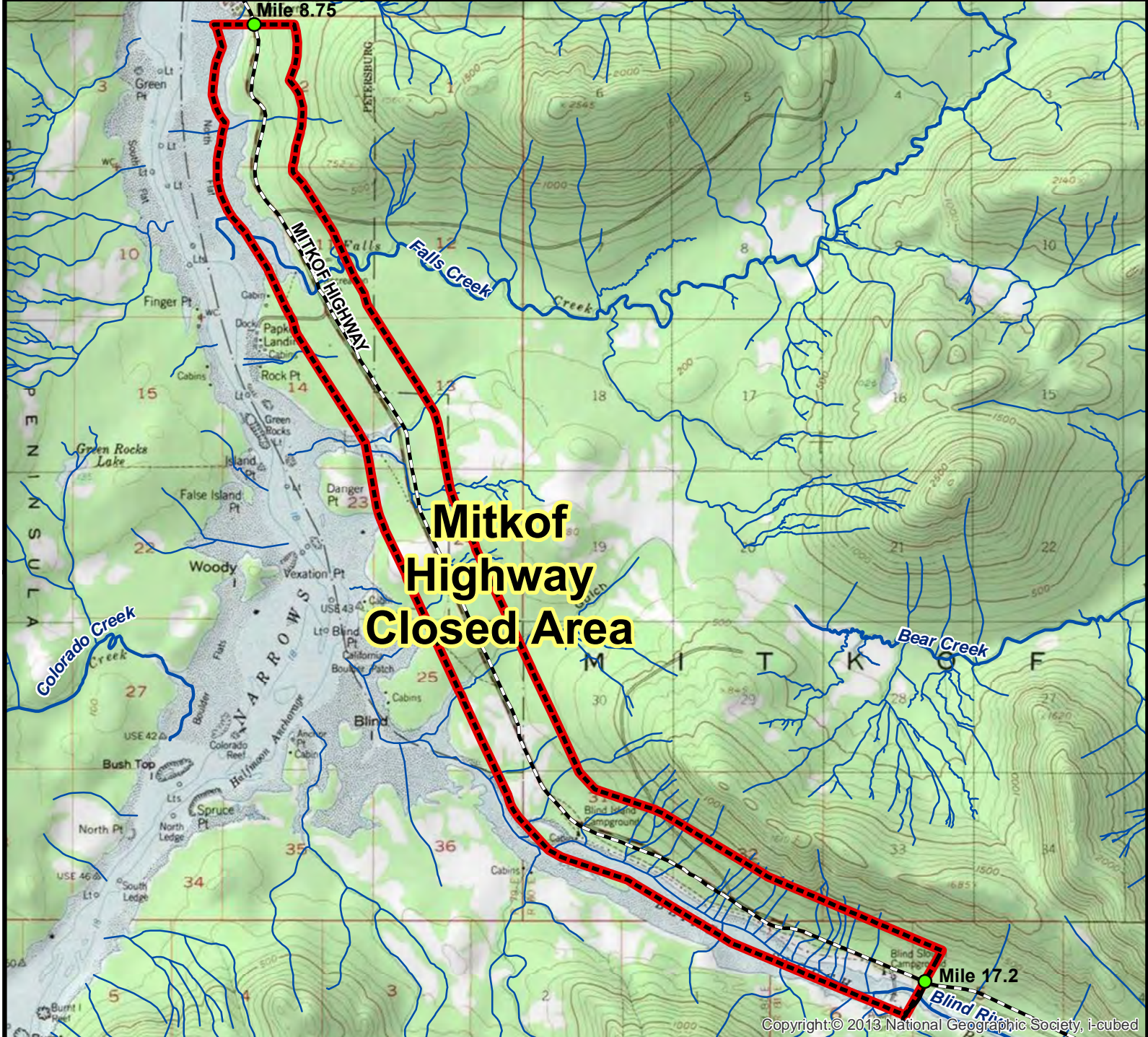


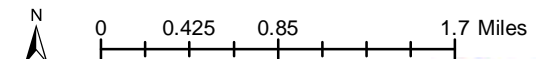
Unit 3 Mitkof Highway Closed Area



Copyright: © 2013 National Geographic Society, i-cubed

AREA DESCRIPTION: Unit 3, in the Petersburg vicinity, a strip one-fourth mile wide on each side of the Mitkof Highway from mile marker 8.75 of the Mitkof Highway to the Crystal Lake campground.

The area is closed to the taking of big game, except wolves.



- Closed Area
- Subunit Boundary
- Controlled Use Area
- Management Area
- National Park/Monument
- National Wildlife Refuge
- Military Closure
- Other State Areas
- Closed to Hunting

