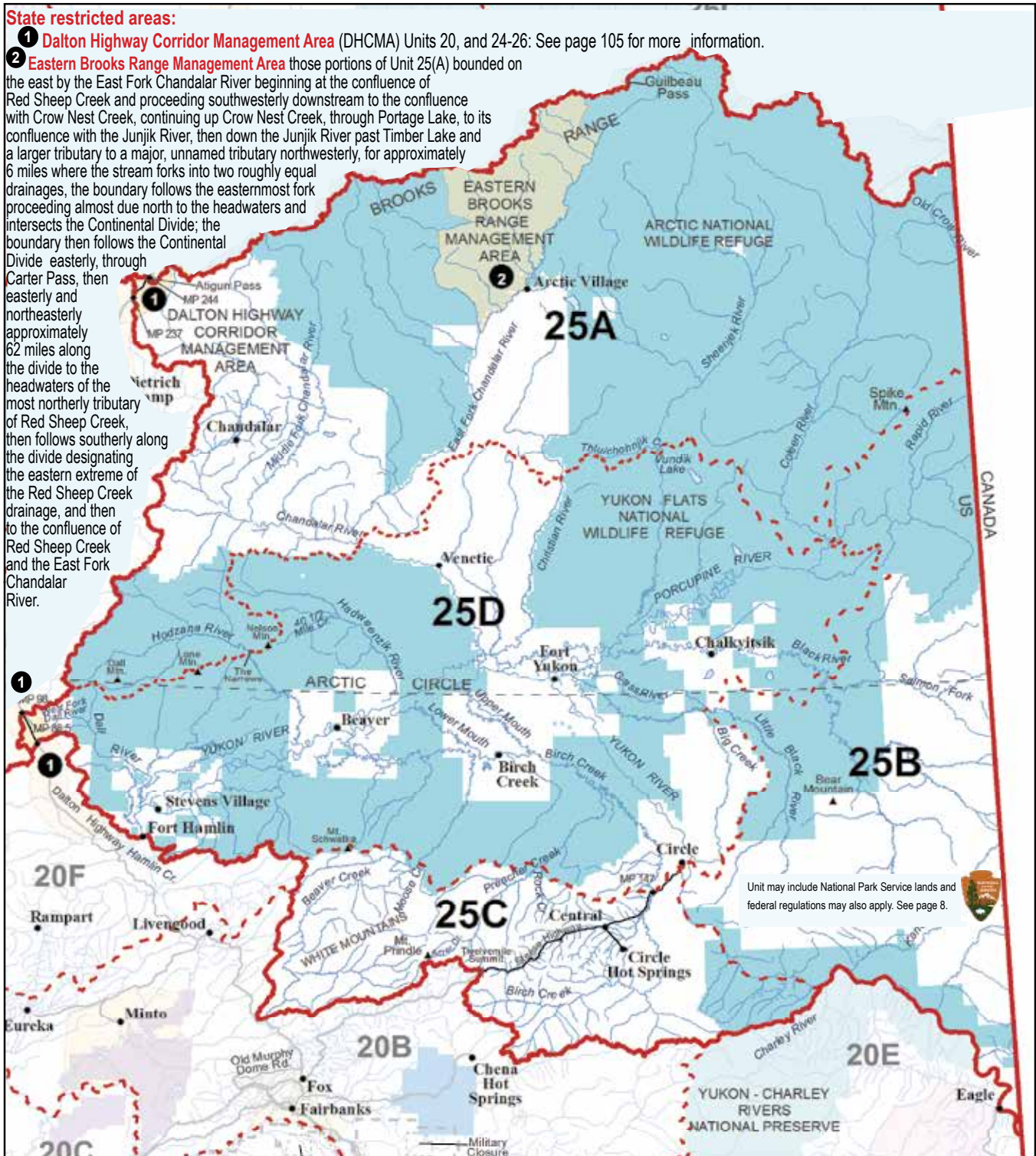


State restricted areas:

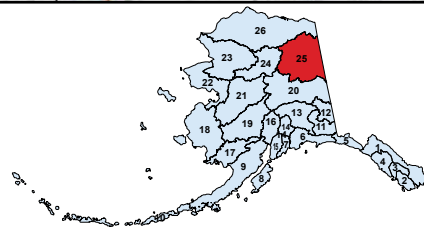
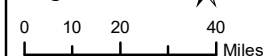
1 **Dalton Highway Corridor Management Area** (DHCMA) Units 20, and 24-26: See page 105 for more information.

2 **Eastern Brooks Range Management Area** those portions of Unit 25(A) bounded on the east by the East Fork Chandalar River beginning at the confluence of Red Sheep Creek and proceeding southwesterly downstream to the confluence with Crow Nest Creek, continuing up Crow Nest Creek, through Portage Lake, to its confluence with the Junjik River, then down the Junjik River past Timber Lake and a larger tributary to a major, unnamed tributary northwesterly, for approximately 6 miles where the stream forks into two roughly equal drainages, the boundary follows the easternmost fork proceeding almost due north to the headwaters and intersects the Continental Divide; the boundary then follows the Continental Divide easterly, through Carter Pass, then easterly and northeasterly approximately 62 miles along the divide to the headwaters of the most northerly tributary of Red Sheep Creek, then follows southerly along the divide designating the eastern extreme of the Red Sheep Creek drainage, and then to the confluence of Red Sheep Creek and the East Fork Chandalar River.



Unit 25
Upper Yukon

Region 3



Game Management Units / Special Management Areas

- Closed Areas
- Controlled Use Areas
- Management Areas
- State Refuges, Sanctuaries, & Critical Habitat Areas
- Other State Lands
- National Parks
- National Preserves & Other Federal Lands
- Unit Boundary
- Subunit Boundary
- City Boundary
- Military Boundary
- Military Closure
- Tangle Lakes Archaeological District
- Roads
- Railroads
- Trails

Unit 25

Upper Yukon

See map on page 132 for state restricted areas in Unit 25.

Unit 25: The Yukon River drainage upstream from but not including the Hamlin Creek drainage, and excluding drainages into the south bank of the Yukon River upstream from the Charley River;

Unit 25A: the Hodzana River drainage upstream from the Narrows, the Chandalar River drainage upstream from and including the East Fork drainage, the Christian River drainage upstream from Christian, the Sheenjek River drainage upstream from and including the Thluichohnjek Creek, the Coleen River drainage, and the Old Crow River drainage;


Unit 25B: the Little Black River drainage upstream from but not including the Big Creek drainage, the Black River drainage upstream from and including the Salmon Fork drainage, the Porcupine River drainage upstream from the confluence of the Coleen and Porcupine rivers, and drainages into the north bank of the Yukon River upstream from Circle, including the river and the islands in the Yukon River;

Unit 25C: the drainages into the south bank of the Yukon River upstream from Circle to the Unit 20E boundary, the Birch Creek drainage upstream from the Steese Highway bridge (MP 147), the Preacher Creek drainage upstream from and including the Rock Creek drainage, and the Beaver Creek drainage upstream from and including the Moose Creek drainage;

Unit 25D: the remainder of Unit 25.





OPEN TO:		R = RESIDENTS ONLY	B = RESIDENTS AND NONRESIDENTS	N = NONRESIDENTS ONLY		
OPEN TO:	UNIT/ AREA	BAG LIMIT AND SPECIAL INSTRUCTIONS			PERMIT/ HUNT #*	OPEN SEASON
Black Bear <ul style="list-style-type: none"> • See pages 24-27 for bear information and salvage requirements. • Portions of Units 25A and 25D are within the DHCMA and additional restrictions apply, see page 105. 						
B	25A	Three bears				no closed season
B	25B 25C	Five bears				no closed season
R	25D	<input type="checkbox"/> Five bears OR <input type="checkbox"/> Five bears by permit			Community	no closed season
N		Five bears				no closed season
Brown/Grizzly Bear <ul style="list-style-type: none"> • No resident locking-tag required. • Nonresident hunters must be accompanied by a guide, see page 10. • See pages 24-27 for additional bear hunting information. • Evidence of sex must remain naturally attached to the hide. • Portions of Units 25A and 25D are within the DHCMA and additional restrictions apply, see page 105. 						
B	25A 25B	One bear every regulatory year				July 25-June 30
B	25C	One bear every regulatory year				Sept 1-May 31
R	25D	<input type="checkbox"/> Two bears every regulatory year OR <input type="checkbox"/> Two bears every regulatory year				July 1-Nov 30
N		<input type="checkbox"/> One bear every regulatory year OR <input type="checkbox"/> One bear every regulatory year				Sept 1-Nov 30 Mar 1-June 15
Caribou <ul style="list-style-type: none"> • Before hunting the Fortymile Herd, call (907) 267-2310. • In all hunts limited to one sex, evidence of sex must remain naturally attached to the meat. • In bag limit, "caribou" means an animal of either sex; "bull" means male caribou. • Meat taken in Unit 25A prior to Oct 1 must remain on the bones of the front quarters, hindquarters, and ribs until removed from the field or processed for human consumption. • Proxy hunting restrictions apply, see page 12. • Portions of Units 25A and 25D are within the DHCMA and additional restrictions apply, see page 105. 						
R	25A	Ten caribou			HT	July 1-Apr 30
N	25B 25D remainder	Two bulls			HT	Aug 1-Sept 30
R	25C	One caribou per lifetime, youth hunt by permit only			YC831	For additional information, see page 108
N		One caribou by permit			RC860	
R		One bull by permit				
R		One caribou by permit			RC867	
R		One caribou by permit only			AC999	may be announced

*Hunt numbers starting with a "C" = Community, "D" = Drawing, "HT" = Harvest ticket, "R" = Registration, "T" = Tier II. See pages 14-15.

OPEN TO:		R = RESIDENTS ONLY	B = RESIDENTS AND NONRESIDENTS	N = NONRESIDENTS ONLY		
OPEN TO:	UNIT/ AREA	BAG LIMIT AND SPECIAL INSTRUCTIONS			PERMIT/ HUNT #*	OPEN SEASON
Caribou <i>continued</i>						
R	25D	drained by the west fork of the Dall River, west of 150° W. long	One caribou		HT	Aug 10-Mar 31
N			One caribou		HT	Aug 10-Sept 30
Moose <ul style="list-style-type: none"> • In areas indicated by a  federal restrictions exist, see page 8. • In bag limit, “moose” means an animal of either sex; “bull” means a male moose. • 50-inch antlers and brow tines are defined on pages 30-31. • Meat taken in Unit 25 prior to Oct 1 must remain on the bones of the front quarters, hindquarters, and ribs until removed from the field or processed for human consumption. • In all hunts limited to one sex, evidence of sex must remain naturally attached to the meat. • Portions of Units 25A and 25D are within the DHCMA and additional restrictions apply, see page 105. 						
R	25A	Dalton Highway Corridor Management Area	One bull by bow and arrow only by permit		DM920	Sept 1-Sept 25
N			One bull with 50-inch antlers or antlers with 4 or more brow tines on at least one side by bow and arrow only by permit		DM920	Sept 5-Sept 25
R	25A	remainder	One bull		HT	Sept 5-Sept 25
N			One bull with 50-inch antlers or antlers with 4 or more brow tines on at least one side		HT	Sept 5-Sept 25
R	25B	within the Porcupine River drainage upstream from, but excluding the Coleen River drainage	One bull		HT	Sept 10-Sept 25
N			One bull with 50-inch antlers or antlers with 4 or more brow tines on at least one side		HT	Sept 10-Sept 25
R	25B	remainder	One bull	HT	Sept 5-Sept 25	
			OR	One bull	HT	Dec 1-Dec 15
			One bull by permit	CM001	Sept 5-Sept 25	
			One bull by permit	CM001	Dec 1-Dec 15	
N	One bull with 50-inch antlers or antlers with 4 or more brow tines on at least one side		HT	Sept 5-Sept 25		
R	25C	One bull		HT	Sept 1-Sept 15	
N		One bull with 50-inch antlers or antlers with 4 or more brow tines on at least one side		HT	Sept 5-Sept 15	
R	25D	west of a line extending from the Unit 25D boundary on Preacher Creek, then downstream along the west banks of Preacher Creek, Birch Creek, and Lower Mouth Birch Creek to the Yukon River, then downstream along the north bank of the Yukon River (including islands) to the confluence of the Hadweenzik River, then upstream along the west bank of the Hadweenzik River to the confluence of Forty and One-Half Mile Creek, then upstream along Forty and One-Half Mile Creek to Nelson Mountain on the Unit 25D boundary	One bull by permit		TM940	Aug 25-Feb 28
R	25D	remainder	One bull	HT	Sept 10-Sept 20	
			OR	One bull	HT	Feb 18-Feb 28
			One bull by permit	CM001	Sept 10-Sept 20	
			One bull by permit	CM001	Feb 18-Feb 28	
N	One bull with 50-inch antlers or antlers with 4 or more brow tines on at least one side		HT	Sept 10-Sept 20		

*Hunt numbers starting with a “C” = Community, “D” = Drawing, “HT” = Harvest ticket, “R” = Registration, “T” = Tier II. See pages 14-15.

Mule deer and white-tailed deer may be harvested. See page 28 for more information.

OPEN TO:		R = RESIDENTS ONLY	B = RESIDENTS AND NONRESIDENTS	N = NONRESIDENTS ONLY	
OPEN TO:	UNIT/ AREA	BAG LIMIT AND SPECIAL INSTRUCTIONS		PERMIT/ HUNT #*	OPEN SEASON
Sheep <ul style="list-style-type: none"> • In areas indicated by a  federal restrictions exist, see pg 8. • Nonresident hunters must be accompanied by a guide, see pg 10. • Ram horns must be sealed within 30 days of kill except for the Registration hunt RS595. • Portions of Units 25A and 25D are within the DHCMA and additional restrictions apply, see pg 105. • See definition of full-curl horn and drawings on pg 33. • Horns must accompany meat from the field. 					
R	25A  east of the Middle Fork of the Chandalar River, excluding the Eastern Brooks Range Management Area	One ram with full-curl horn or larger. Youth hunt only	HT	Aug 1-Aug 5	
		OR	One ram with full-curl horn or larger	HT	Aug 10-Sept 20
		One ram with 3/4 curl horn or less by permit available online at http://hunt.alaska.gov or in person in Fairbanks and Kaktovik beginning Sept 9. The use of aircraft for access to hunt sheep and to transport harvested sheep is prohibited in this hunt except into and out of the Arctic Village and Kaktovik airports. No motorized access from the Dalton Highway.	RS595	Oct 1-April 30	
N		One ram with full-curl horn or larger every four regulatory years. Youth hunt only	HT	Aug 1-Aug 5	
		One ram with full-curl horn or larger every four regulatory years	HT	Aug 10-Sept 20	
R	25A  within the Dalton Highway Corridor Management Area	One ram with full-curl horn or larger. Youth hunt only	HT	Aug 1-Aug 5	
N		One ram with full-curl horn or larger every four regulatory years. Youth hunt only			
R		One ram with full-curl horn or larger	HT	Aug 10-Oct 5	
N		One ram with full-curl horn or larger every four regulatory years			
R	25A  Eastern Brooks Range Management Area	One ram with full-curl horn or larger. Youth hunt only	HT	Aug 1-Aug 5	
		OR	One ram with 3/4 curl horn or less every four regulatory years by permit available online at http://hunt.alaska.gov or in person in Fairbanks and Kaktovik beginning Sept 9. The use of aircraft for access to hunt sheep and to transport harvested sheep is prohibited in this hunt except into and out of the Arctic Village and Kaktovik airports. No motorized access from the Dalton Highway	RS595	Oct 1-April 30
R	25A remainder	One ram with full-curl horn or larger. Youth hunt only	HT	Aug 1-Aug 5	
N		One ram with full-curl horn or larger every four regulatory years. Youth hunt only			
R		One ram with full-curl horn or larger	HT	Aug 10-Sept 20	
N		One ram with full-curl horn or larger every four regulatory years			
R	25B 25C 25D	One ram with full-curl horn or larger. Youth hunt only	HT	Aug 1-Aug 5	
N		One ram with full-curl horn or larger every four regulatory years. Youth hunt only			
R		One ram with full-curl horn or larger	HT	Aug 10-Sept 20	
N		One ram with full-curl horn or larger every four regulatory years			
Wolf <ul style="list-style-type: none"> • A portion of this unit is within a predator control area. See predator control supplement for special regulations. Supplement available online at http://hunt.alaska.gov • Hides must be sealed within 30 days of kill. • Portions of Units 25A and 25D are within the DHCMA and additional restrictions apply, see page 105. • No nonresident locking-tag required. 					
B	25	Ten wolves			Aug 1-Apr 30
Wolverine <ul style="list-style-type: none"> • Hides must be sealed within 30 days of kill. • Portions of Units 25A and 25D are within the DHCMA and additional restrictions apply, see page 105. 					
B	25	One wolverine			Sept 1-Mar 31

*Hunt numbers starting with a "C" = Community, "D" = Drawing, "HT" = Harvest ticket, "R" = Registration, "T" = Tier II. See pages 14-15.