



Advisory Announcement

For Immediate Release: July 24, 2022

CONTACT: Heather Scannell and Jeremy Botz

Finfish Area Management Biologists

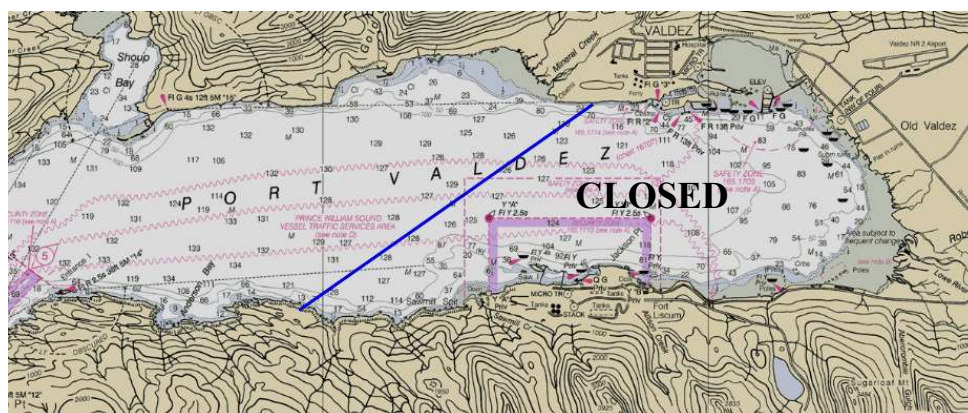
(907) 424-3212

Prince William Sound Salmon Fishery Announcement #41

SEINE FISHERIES: An aerial survey of the Montague, Southwestern and Northern Districts were flown yesterday, July 23 and the Eastern District is being flown today. Wild stocks are within anticipated levels for this date and can support limited commercial fishing opportunities. Dependent on fisheries performance data and effort, the next broad area commercial purse seine fishing period may occur as early as Thursday, July 28, with time and area specifics to be announced Wednesday, July 27.

EASTERN DISTRICT: Waters of the Eastern District will open to commercial purse seine fishing for a 14-hour period, from 6:00 am until 8:00 pm, on Monday, July 25. **Waters of Port Valdez east of a line from a point on shore at 61° 04.85' N., 146°30.62' W., to a point on shore at 61° 07.43' N., 146°23.00' W., will be closed to commercial fishing during this period.** Regulatory closed waters and anadromous stream closures north of a line from Potato Point to Entrance Point will not be in effect during this fishing period. Preliminary harvest for the period on Friday, July 22 was 661,000 pink salmon with 101 reported deliveries. Pink salmon harvest contribution from the period on July 19 was 53% SGH, and 47% wild.

Regulatory closed waters and anadromous stream closures of Simpson Bay (5 AAC 24.350 (3)(A)) will not be in effect for this fishing period.



Waters inside of the following Eastern District Salmon Harvest Task Force (SHTF) markers will be closed for this period to ensure escapement.

- (1) **Jack Bay:** waters south and east of a line from a shore marker at approximately 61°02.34' N. lat., 146°35.27' W. long. to a shore marker at approximately 61°02.17' N. lat., 146°39.77' W. long.;
- (2) **Sawmill Bay:** north of a line from a marker on shore at approximately 61°02.71' N. lat., 146°46.44' W.

- long. to a shore marker at approximately 61°02.58' N. lat., 146°47.07' W. long.;
- (3) **Galena Bay:** waters east of a line from a shore marker at approximately 60°56.87' N. lat., 146°39.87' W. long. to a shore marker at approximately 60°56.55' N. lat., 146°39.65' W. long.;
 - (4) **Port Fidalgo Subdistrict:** waters east of 146°24.12' W. long.
 - (5) **Landlocked Bay:** waters north of 60°50.76' N. lat.;
 - (6) **Beartrap Bay:** north of a line from a shore marker at approximately 60°45.13' N. lat., 146°06.12' W. long. to a shore marker at approximately 60°44.51' N. lat., 146°04.57' W. long.; **this includes all waters of Port Gravina and Beartrap Bay inside of this line;**
 - (7) **Olsen Bay:** north of a line from a shore marker at approximately 60°43.46' N. lat., 146°10.14' W. long. to a shore marker at approximately 60°43.21' N. lat., 146°13.97' W. long.;
 - (8) **St. Matthews Bay:** north of a line from a shore marker at approximately 60°43.36' N. lat., 146°19.07' W. long. to a shore maker at approximately 60°43.61' N. lat., 146°21.17' W. long.;
 - (9) **Irish Cove:** south of a line from a shore marker at approximately 60°46.73' N. lat., 146°26.62' W. long. to a shore marker at approximately 60°46.27' N. lat., 146°27.12' W. long.;

NORTHERN DISTRICT: Waters of the Northern District, **excluding the Perry Island Subdistrict**, will open to commercial purse seine fishing for a 14-hour period, from 6:00 am until 8:00 pm, on Monday, July 25. Regulatory closed waters and anadromous stream closures within the CCH THA and SHA will not be in effect for this period. Preliminary harvest for the period on Friday, July 22 was 415,500 pink salmon with 39 reported deliveries.

COGHILL DISTRICT: The Coghill District, excluding waters of the Esther Subdistrict and WNH SHA and THA, will open to commercial and drift gillnet harvest for a 14-hour period, from 6:00 am until 8:00 pm, on Monday, July 25. **Waters of Port Wells and College Fiord, north of 60° 55.81' N., and east of a line from Pakenham Point (61° 00.45' N., 148° 04.85' W.) to 60° 55.81' N., 148° 10.92' W., will open to commercial purse seine and drift gillnet harvest for two 14-hour periods starting at 6:00 am on Tuesday, July 26, and 6:00 am on Wednesday, July 27.** Regulatory closed waters pertaining to the Coghill River, as specified in 5 AAC 24.350(6)(B), will not be in effect for this fishing period. Commercial fishing will not be permitted within the bed or channel of the Coghill River at any stage of the tide. The Coghill River weir has not enumerated salmon since the afternoon of 7/17 due to high water. To-date, 34,092 sockeye salmon have been enumerated with a cumulative target of 17,615–52,844 fish. Preliminary harvest estimate for the period ending on Friday, July 22 was 32,100 pink, 2,900 sockeye salmon, and 5,200 chum salmon with 71 deliveries reported. Pink salmon harvest contribution from the period ending on July 20 was 60% wild, 31% WNH, and 9% SGH.

NORTHWESTERN DISTRICT: Waters of the Northwestern District will open to commercial purse seine fishing for a 14-hour period, from 6:00 am until 8:00 pm, on Monday, July 25. Preliminary harvest for the period on Friday, July 22 was 46,200 pink salmon with 14 reported deliveries.

Copies of the updated regulation booklet, *2022-2024 Commercial Salmon Fishing Regulations for Prince William Sound*, are not yet available in the Cordova ADFG office. In the interim, please reference https://www.adfg.alaska.gov/static/regulations/fishregulations/pdfs/commercial/2022-2024_cf_pws_salmon_regs.pdf.

ALL buyers purchasing fish in the PWS Management Area are required to complete a Processor Registration Form. Contact the Cordova office for any questions regarding registration.

The next scheduled seine fisheries announcement is anticipated to be at 2:00 pm on Wednesday, July 27. The next scheduled gillnet fisheries announcement is anticipated to be at 2:00 pm on Wednesday, July 27.

Permit holders are advised that unscheduled announcements based on current escapement data may occur at anytime

inseason either establishing an additional period or extending an open period.

Announcement recordings are available for **gillnet fisheries at 907-424-7535 and seine fisheries at 907-424-7345. In addition, announcement recordings are available in Anchorage at 267-2843.**

Additionally, announcements, inseason harvest data, and escapement data are available at the following web address: <http://www.adfg.alaska.gov/index.cfm?adfg=commercialbyareapws.main> (Prince William Sound and CopperRiver homepage).

Unless otherwise specified, all openings are clock openings based on Alaska Daylight Time, which is based on Coordinated Universal Time and may be obtained by calling 303-499-7111.

The department encourages commercial permit holders to renew their licenses early and to check their CFEC vessel registration stickers to make sure they are current.

The department also encourages permit holders to report observed violations to Wildlife Safeguard at 800-478-3377. Reports are anonymous and cash rewards may be paid for successful prosecution of violations.