



Advisory Announcement

For Immediate Release: July 20, 2022

CONTACT: Heather Scannell and Jeremy Botz

Finfish Area Management Biologists

(907) 424-3212

Prince William Sound Salmon Fishery Announcement #38

COPPER RIVER DISTRICT: The Copper River District will open at 7:00 am on Thursday, July 21 for a 48-hour commercial drift gillnet fishing period.

The grass bank marker line is defined in 5AAC 24.350(1)(A) with the exception of this year's extension of the closure line across Little Softuk (**see bold font below**). This closure line is defined with the following points:

<i>Point</i>	<i>Latitude</i>	<i>Longitude</i>
Point Whitshed South	60° 26.49' N.	145° 52.86' W.
Alaganik Slough North	60° 24.65' N.	145° 36.70' W.
Pete Dahl East	60° 20.44' N.	145° 29.14' W.
West Kokenhenik	60° 14.88' N.	145° 10.01' W.
East "East Side"	60° 14.83' N.	145° 03.36' W.
Coffee Creek East	60° 14.19' N.	144° 58.01' W.
Charlie Mohr North	60° 15.15' N.	144° 56.43' W.
Martin River North	60° 15.29' N.	144° 52.52' W.
Strawberry Reef	60° 13.93' N.	144° 50.66' W.
Little Softuk	60° 13.16' N.	144° 41.38' W.

Waters north of this line, within sloughs, and in Boswell Bay within the bay (5 AAC 24.350 (1)(A)) are closed to commercial and subsistence salmon fishing during all periods.

During the commercial fishing season, subsistence harvest may occur in the Copper River District concurrent in time and area with commercial fishing periods until the Copper River District is closed at the end of the season. Additionally, waters of the Copper River District, **including** the expanded Chinook salmon inside closure area, will open to subsistence fishing from 6:00 am to 10:00 pm on all Saturdays between June 22 and October 31. Prince William Sound Management Area salmon subsistence permits may be obtained through any ADF&G office or online (<https://www.adfg.alaska.gov/Store/>). **In Cordova, permits will be available during normal business hours Monday through Friday from 8:00 a.m. to 12:00 p.m. and 1:00 p.m. to 5:00 p.m.** ADF&G staff will not be available to issue permits before hours, after hours, on state holidays, or on weekends. Permit holders are encouraged to call the Cordova office at 907-424-3212 or report online (<https://www.adfg.alaska.gov/Harvest/>) to provide preliminary harvest reports to assist with inseason harvest tracking.

Cumulative sonar count through 7/19 was 751,699 fish whereas 571,391 fish are projected by this date. The 0600 count for 7/20 is 325 fish. For the week ending July 16, the actual Copper River Delta survey count was 32,135 sockeye salmon versus an anticipated range 31,424 – 74,276. Observational conditions on this survey were poor in some index

reaches. Preliminary harvest estimate from the 48-hour period that started on Thursday, July 14 was 11,900 sockeye and 6,000 pink salmon with 90 deliveries reported. Preliminary harvest estimate from the 36-hour period that started on Monday, July 18 was 4,800 sockeye and 1,700 pink salmon with 33 deliveries reported.

BERING RIVER DISTRICT: The Bering River District will remain closed.

ESHAMY DISTRICT: The Main Bay Subdistrict will open to commercial **drift gillnet** harvest for a **24-hour period** starting at 8:00 am on Thursday, July 21. The Main Bay Subdistrict will open to commercial **set gillnet** harvest for a **12-hour period** starting at 8:00 am on Thursday, July 21. The AGZ will open to **SET GILLNET** permit holders only during the **first 12 hours** of this fishing period. The Eshamy River weir has passed 567 sockeye salmon through 7/19 with a cumulative target of 1,244–2,680 fish for the date. Preliminary harvest estimate from the 24-hour period that started on Monday, July 18 was 45,400 sockeye, 41,600 pink, and 10,300 chum salmon with 199 deliveries reported.

SEINE FISHERIES: An aerial survey of the Northern District is being flown today and an aerial survey of the Eastern and Southeastern Districts was flown on July 18, and wild stocks are within anticipated levels for this date. Persistent fog and adverse weather conditions have impacted the aerial survey schedule but surveys are ongoing as weather allows. Dependent on fisheries performance data and effort, the next broad area commercial purse seine fishing period may occur as early as Monday, July 25, with time and area specifics to be announced Sunday, July 24.

EASTERN DISTRICT: Waters of the Eastern District will open to commercial purse seine fishing for a 14-hour period, from 6:00 am until 8:00 pm, on Friday, July 22. **Area adjustments will be announced tomorrow, July 21, for Valdez Arm and Port Valdez.** Preliminary harvest for the period on Tuesday, July 19 was 2.35 million pink salmon with 251 reported deliveries. Pink salmon harvest contribution from the period occurring on July 13 was 99% SGH and 1% wild, and from the period on July 15, harvest was 76% SGH and 24% wild.

Waters inside of the following Eastern District Salmon Harvest Task Force (SHTF) markers will be closed for this period to ensure escapement.

- (1) **Galena Bay:** waters east of a line from a shore marker at approximately 60°56.87' N. lat., 146°39.87' W. long. to a shore marker at approximately 60°56.55' N. lat., 146°39.65' W. long.;
- (2) **Jack Bay:** waters south and east of a line from a shore marker at approximately 61°02.34' N. lat., 146°35.27' W. long. to a shore marker at approximately 61°02.17' N. lat., 146°39.77' W. long.;
- (3) **Sawmill Bay:** north of a line from a marker on shore at approximately 61°02.71' N. lat., 146°46.44' W. long. to a shore marker at approximately 61°02.58' N. lat., 146°47.07' W. long.;
- (4) **Port Fidalgo Subdistrict:** waters east of 146°24.12' W. long.
- (5) **Landlocked Bay:** waters north of 60°50.76' N. lat.;
- (6) **St. Matthews Bay:** north of a line from a shore marker at approximately 60°43.36' N. lat., 146°19.07' W. long. to a shore maker at approximately 60°43.61' N. lat., 146°21.17' W. long.;

NORTHERN DISTRICT: Waters of the Northern District will open to commercial purse seine fishing for a 14-hour period, from 6:00 am until 8:00 pm, on Friday, July 22. Preliminary harvest for the period on Tuesday, July 19 was 79,000 pink salmon with 4 reported deliveries.

Waters inside of the following Northern District Salmon Harvest Task Force (SHTF) markers will be closed for this period to ensure escapement. Waters closed for this period include the following areas:

- (1) **Wells Bay:** north of a line from a shore marker at approximately 60°56.75' N. lat., 147°29.92' W. long. to a shore marker at approximately 60°57.08' N. lat., 147°28.14' W. long.;

- (2) **Eaglek Bay**: north of a line from a shore marker at approximately 60°50.66' N. lat., 147°40.27' W. long. to a shore marker at approximately 60°50.56' N. lat., 147°44.57' W. long.;

COGHILL DISTRICT: The Coghill District, excluding waters of the WNH SHA and THA, will open to commercial PURSE SEINE and drift gillnet harvest for a 14-hour period, from 6:00 am until 8:00 pm, on Friday, July 22. **Waters of Port Wells and College Fiord, north of 60° 55.81' N., and east of a line from Pakenham Point (61° 00.45' N., 148° 04.85' W.) to 60° 55.81' N., 148° 10.92' W., will open to commercial PURSE SEINE and drift gillnet harvest for a 38-hour period starting at 6:00 am on Thursday, July 21, and for two 14-hour periods starting at 6:00 am on Saturday, July 23, and 6:00 am on Sunday, July 24.** Regulatory closed waters pertaining to the Coghill River, as specified in 5 AAC 24.350(6)(B), will not be in effect for this fishing period. Commercial fishing will not be permitted within the bed or channel of the Coghill River at any stage of the tide. The Coghill River weir has not enumerated salmon since the afternoon of 7/17 due to high water. To-date, 34,092 sockeye salmon have been enumerated with a cumulative target of 17,615–52,844 fish. Preliminary harvest estimate from the 84-hour period that started on Thursday, July 14 was 11,300 sockeye, 74,800 pink, and 97,900 chum salmon with 516 deliveries reported. Pink salmon harvest contribution from the period ending on July 14 was 89% wild, 7% WNH, and 4% SGH.

PWSAC recommends opening the Esther and Granite Bay Subdistricts for the period on Friday, July 22. Combined sockeye and chum salmon cost recovery harvest is currently 78% complete.

Waters inside of the following Coghill District Salmon Harvest Task Force (SHTF) markers will be closed for the Friday period to ensure escapement:

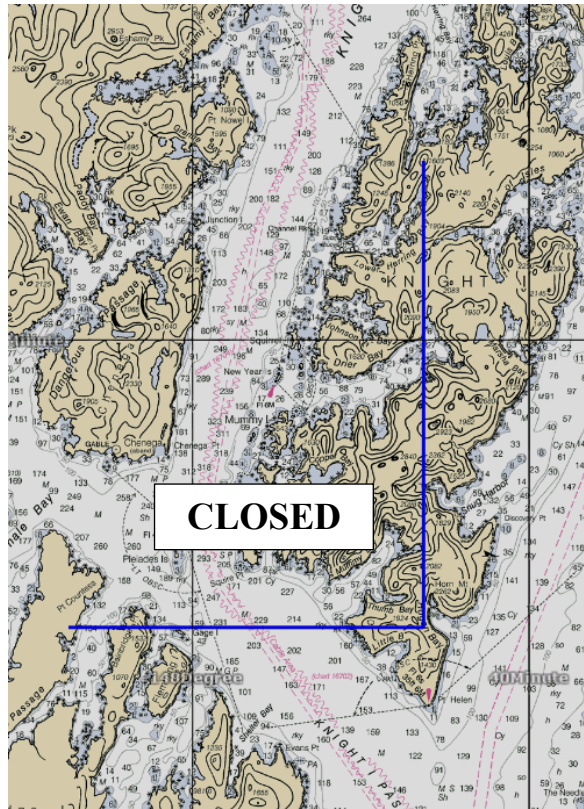
- (1) **Bettles Bay**: west of a line from a shore marker at approximately 60°56.16' N. lat., 148°14.76' W. long. to a shore marker at approximately 60°54.97' N. lat., 148°16.09' W. long.;
- (2) **Hummer Bay**: west of a line from a shore marker at approximately 60°53.56' N. lat., 148°16.62' W. long. to a shore marker at approximately 60°51.56' N. lat., 148°17.52' W. long.;
- (3) **Pigot Bay**: west of a line from a shore marker at approximately 61°49.96' N. lat., 148°19.07' W. long. to a shore marker at approximately 61°00.40' N. lat., 148°20.12' W. long.;

NORTHWESTERN DISTRICT: Waters of the Northwestern District will open to commercial purse seine fishing for a 14-hour period, from 6:00 am until 8:00 pm, on Friday, July 22. Preliminary harvest for the period on Friday, July 15 was 23,000 pink salmon with 4 reported deliveries.

SOUTHWESTERN DISTRICT: Waters of the Southwestern District, south of the latitude of 60°11.50' N., and waters of eastern Knight Island east of Point Helen (147°46.27' W.), will open to commercial purse seine fishing for a 14-hour period from 6:00 am until 8:00 pm on Friday, July 22.

MONTAGUE DISTRICT: The Port Chalmers Subdistrict, north of 60°12.56' N. lat. and east of a line from 60° 12.56' N., 147°20.25' W. to 60°20.00' N., 147°14.30' W., will open to commercial purse seine fishing for a 38-hour period starting at 6:00 am on Thursday, July 21. Regulatory closed waters and anadromous stream closures within the Port Chalmers Subdistrict **WILL BE** in effect for the remainder of the season. Preliminary harvest for the period on Sunday, July 17 was 12,400 chum salmon and 12,000 pink salmon with 4 reported deliveries. **Following this period, the Montague District will transition to wild stock pink management.**

SOUTHEASTERN DISTRICT: Waters of the Southeastern District will open to commercial purse seine fishing for a 14-hour period, from 6:00 am until 8:00 pm, on Friday, July 22.



Copies of the updated regulation booklet, *2022-2024 Commercial Salmon Fishing Regulations for Prince William Sound*, are not yet available in the Cordova ADFG office. In the interim, please reference https://www.adfg.alaska.gov/static/regulations/fishregulations/pdfs/commercial/2022-2024_cf_pws_salmon_regs.pdf.

ALL buyers purchasing fish in the PWS Management Area are required to complete a Processor Registration Form. Contact the Cordova office for any questions regarding registration.

The next scheduled seine fisheries announcement is anticipated to be at 2:00 pm on Thursday, July 21. The next scheduled gillnet fisheries announcement is anticipated to be at 2:00 pm on Friday, July 22.

Permit holders are advised that unscheduled announcements based on current escapement data may occur at anytime inseason either establishing an additional period or extending an open period.

Announcement recordings are available for **gillnet fisheries at 907-424-7535 and seine fisheries at 907-424-7345. In addition, announcement recordings are available in Anchorage at 267-2843.**

Additionally, announcements, inseason harvest data, and escapement data are available at the following web address:

Unless otherwise specified, all openings are clock openings based on Alaska Daylight Time, which is based on Coordinated Universal Time and may be obtained by calling 303-499-7111.

The department encourages commercial permit holders to renew their licenses early and to check their CFEC vessel registration stickers to make sure they are current.

The department also encourages permit holders to report observed violations to Wildlife Safeguard at 800-478-3377. Reports are anonymous and cash rewards may be paid for successful prosecution of violations.