



Advisory Announcement

For Immediate Release: July 16, 2022

CONTACT: Heather Scannell and Jeremy Botz

Finfish Area Management Biologists

(907) 424-3212

Prince William Sound Salmon Fishery Announcement #34

COPPER RIVER DISTRICT: The Copper River District will open at 7:00 am on Monday, July 18 for a 36-hour commercial drift gillnet fishing period.

The grass bank marker line is defined in 5AAC 24.350(1)(A) with the exception of this year's extension of the closure line across Little Softuk (**see bold font below**). This closure line is defined with the following points:

<i>Point</i>	<i>Latitude</i>	<i>Longitude</i>
Point Whitshed South	60° 26.49' N.	145° 52.86' W.
Alaganik Slough North	60° 24.65' N.	145° 36.70' W.
Pete Dahl East	60° 20.44' N.	145° 29.14' W.
West Kokenhenik	60° 14.88' N.	145° 10.01' W.
East "East Side"	60° 14.83' N.	145° 03.36' W.
Coffee Creek East	60° 14.19' N.	144° 58.01' W.
Charlie Mohr North	60° 15.15' N.	144° 56.43' W.
Martin River North	60° 15.29' N.	144° 52.52' W.
Strawberry Reef	60° 13.93' N.	144° 50.66' W.
Little Softuk	60° 13.16' N.	144° 41.38' W.

Waters north of this line, within sloughs, and in Boswell Bay within the bay (5 AAC 24.350 (1)(A)) are closed to commercial and subsistence salmon fishing during all periods.

During the commercial fishing season, subsistence harvest may occur in the Copper River District concurrent in time and area with commercial fishing periods until the Copper River District is closed at the end of the season. Additionally, waters of the Copper River District, **including** the expanded Chinook salmon inside closure area, will open to subsistence fishing from 6:00 am to 10:00 pm on all Saturdays between June 22 and October 31. Prince William Sound Management Area salmon subsistence permits may be obtained through any ADF&G office or online (<https://www.adfg.alaska.gov/Store/>). **In Cordova, permits will be available during normal business hours Monday through Friday from 8:00 a.m. to 12:00 p.m. and 1:00 p.m. to 5:00 p.m.** ADF&G staff will not be available to issue permits before hours, after hours, on state holidays, or on weekends. Permit holders are encouraged to call the Cordova office at 907-424-3212 or report online (<https://www.adfg.alaska.gov/Harvest/>) to provide preliminary harvest reports to assist with inseason harvest tracking.

Cumulative sonar count through 7/15 was 740,111 fish whereas 545,223 fish are projected by this date. The 0600 count for 7/16 is 782 fish. For the week ending July 9, the actual Copper River Delta survey count was 32,135 sockeye salmon versus an anticipated range 31,424 – 74,276. Observational conditions on this survey were poor in some

index reaches. Preliminary harvest estimates from the 48-hour period started on Thursday, July 14 are not yet available.

BERING RIVER DISTRICT: The Bering River District will remain closed.

COGHILL DISTRICT: The Esther and Granite Bay Subdistricts, and the Wally Noerenberg Hatchery (WNH) THA and SHA, will open to commercial drift gillnet harvest for a 60-hour fishing period starting at 8:00 am on Monday, July 18. Waters of Port Wells and College Fiord, north of 60° 55.81' N., and east of a line from Pakenham Point (61° 00.45' N., 148° 04.85' W.) to 60° 55.81' N., 148° 10.92' W., will open to commercial drift gillnet harvest for a 60-hour period starting at 8:00 am on Monday, July 18.

Until further notice, regulatory closed waters pertaining to the Coghill River, as specified in 5 AAC 24.350(6)(B), will not be in effect during open commercial fishing periods. Commercial fishing will not be permitted within the bed or channel of the Coghill River at any stage of the tide.

The Coghill River weir has passed 32,746 sockeye salmon through 7/15 with a cumulative target of 15,879–47,636 fish for the date. Preliminary harvest estimate from the 72-hour period that started on Monday, July 11 was 6,100 sockeye, 17,900 pink, and 123,300 chum salmon with 432 deliveries reported.

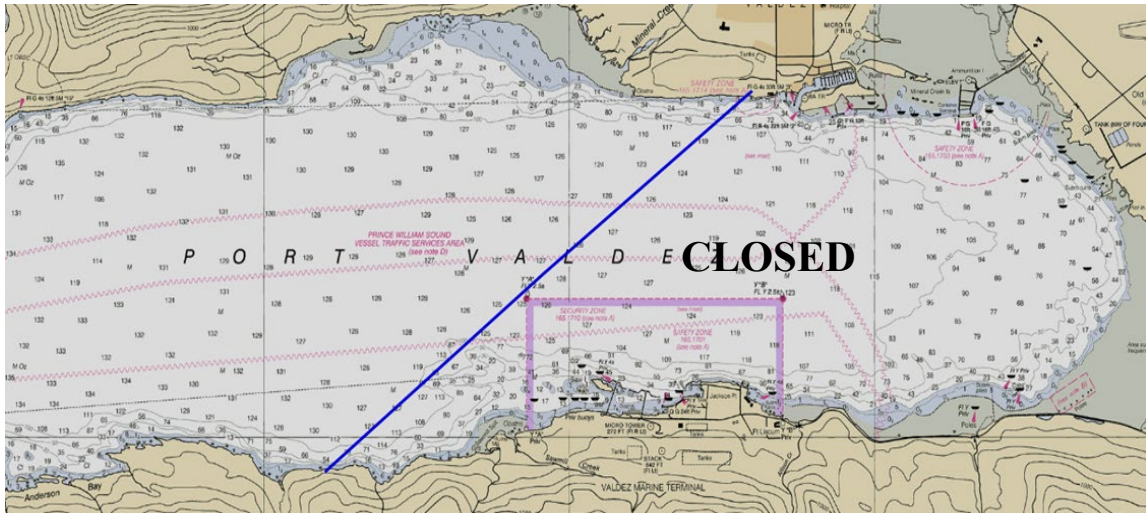
PWSAC recommends opening the Esther and Granite Bay Subdistricts, and the WNH THA and SHA. Combined sockeye and chum salmon cost recovery harvest is currently 75% complete.

ESHAMY DISTRICT: Per 5 AAC 24.370 (f), the set gillnet fleet is limited to 36 hours per week starting July 10. The Eshamy District north of Loomis Creek (60° 29.44'N., 147° 58.42'W.), will open to commercial drift and set gillnet harvest for a 24-hour period starting at 8:00 am on Monday, July 18. The AGZ will open to DRIFT GILLNET permit holders only during this fishing period. The Eshamy River weir has passed 12 sockeye salmon through 7/15 with a cumulative target of 934–2,012 fish for the date. Preliminary harvest estimate from the 24-hour period that started on Thursday, July 14 was 8,400 sockeye, 19,200 pink, and 3,100 chum salmon with 86 deliveries reported.

UNAKWIK DISTRICT: The Unakwik District will open to commercial drift gillnet and purse seine harvest for a 36-hour period starting at 8:00 am on Monday, July 18. The Unakwik District will close for the season after this period.

EASTERN DISTRICT: Waters in the Eastern District, north of a line from 61° 02.855' N., 146° 44.204' W. to 61° 02.373' N., 146° 43.407' W. to 61° 02.992' N., 146° 39.165' W., will open to commercial purse seine fishing for a 14-hour period, from 6:00 am until 8:00 pm, on Sunday, July 17. Waters of Port Valdez east of a line from a point on shore at 61° 04.75' N., 146° 29.00' W., to the Security Zone A Buoy at 61° 06.00' N., 146° 25.70' W., to a point on shore at 61° 07.50' N., 146° 22.00' W., will be CLOSED to commercial fishing during this period. Regulatory closed waters and anadromous stream closures north of a line from Potato Point to Entrance Point will not be in effect during this fishing period. Preliminary harvest from the 14-hour period on Friday, July 15 was 2.33 million pink salmon with 235 deliveries reported. Harvest contribution from the 14-hour period on July 12 was 96% SGH, and 4% wild.

Waters within 200 yards of the AMHS Valdez Ferry Terminal are closed to commercial fishing when the ferry is arriving and departing. All waters of the Valdez small boat harbors and within 50 yards of the entrance to the harbors are closed to commercial fishing. Waters within the Alyeska Marine Terminal (Trans-Alaska Pipeline System) Security Zone are closed to commercial fishing.



MONTAGUE DISTRICT: The Port Chalmers Subdistrict, north of 60°12.56' N. lat. and east of a line from 60° 12.56'N., 147° 20.25'W. to 60° 20.00'N., 147° 14.30'W., will open to purse seine fishing for a 50-hour period starting at 6:00 am on Monday, July 18. Regulatory closed waters and anadromous stream closures within the Port Chalmers Subdistrict will not be in effect until further notice. Preliminary harvest for the period ending on Friday, July 15 was 48,900 chum salmon and 13,000 pink salmon with 21 reported deliveries.

SOUTHWESTERN DISTRICT: The AFK Hatchery THA and SHA will open to purse seine fishing for a 50-hour period starting at 6:00 am on Monday, July 18. Regulatory closed waters and anadromous stream closures within the AFK Hatchery THA and SHA will not be in effect until further notice. Preliminary harvest for the period ending on Friday, July 15 was 13,400 chum salmon, 1,900 pink, and 700 sockeye salmon with 3 reported deliveries.

Copies of the updated regulation booklet, *2022-2024 Commercial Salmon Fishing Regulations for Prince William Sound*, are not yet available in the Cordova ADFG office. In the interim, please reference https://www.adfg.alaska.gov/static/regulations/fishregulations/pdfs/commercial/2022-2024_cf_pws_salmon_regs.pdf.

ALL buyers purchasing fish in the PWS Management Area are required to complete a Processor Registration Form. Contact the Cordova office for any questions regarding registration.

**The next scheduled seine fisheries announcement is anticipated to be at 2:00 pm on Monday, July 18.
The next scheduled gillnet fisheries announcement is anticipated to be at 2:00 pm on Wednesday, July 20.**

Permit holders are advised that unscheduled announcements based on current escapement data may occur at any time inseason either establishing an additional period or extending an open period.

Announcement recordings are available for **gillnet fisheries at 907-424-7535 and seine fisheries at 907-424-7345. In addition, announcement recordings are available in Anchorage at 267-2843.**

Additionally, announcements, inseason harvest data, and escapement data are available at the following web address:

<http://www.adfg.alaska.gov/index.cfm?adfg=commercialbyareapws.main> (Prince William Sound and Copper River homepage).

Unless otherwise specified, all openings are clock openings based on Alaska Daylight Time, which is based on Coordinated Universal Time and may be obtained by calling 303-499-7111.

The department encourages commercial permit holders to renew their licenses early and to check their CFEC vessel registration stickers to make sure they are current.

The department also encourages permit holders to report observed violations to Wildlife Safeguard at 800-478-3377. Reports are anonymous and cash rewards may be paid for successful prosecution of violations.